



Housing Guide

07.25



FULL SAIL
UNIVERSITY.



Full Sail University

Housing Guide



Copyright © 2025 Full Sail, LLC. All rights reserved.

The terms “Full Sail,” “Full Sail University” and the Full Sail Logo are either registered service marks or service marks of Full Sail, LLC.

Other product and company names mentioned herein may be the trademarks of their respective owners. The appearance of these marks does not necessarily indicate a formalized sponsorship or affiliation with other such companies.

For the benefit of its students, employees, and related parties, Full Sail University® has licensed the use of the Housing Department Housing Guide from Silver City Partners, Ltd., a provider of quality housing services and products. Silver City Partners, Ltd. is the Housing Guide administrator. The Housing Department Housing Guide, its concepts, materials, systems, and methods are the exclusive property of Silver City Partners, Ltd. "Full Sail University®" and the Full Sail® logo are registered service marks of Full Sail Records Inc.



2001 Silver City Partners, Ltd.
All Rights Reserved.

YIELDSTAR/LRO

The rates listed in the Housing Guide are current as of the date of publication. Actual rates may vary. Many apartment complexes offer specials that may vary throughout the year, so please inquire about them when requesting your application. Office hours are seasonal and may change slightly.

Yieldstar and Lease Rent Options (LRO) are pricing programs used by some apartments in this guide to calculate prices daily based on availability. Please note that complexes using Yieldstar/LRO are indicated throughout the guide using an asterisk (*). You should request a written quote that specifies how long the price is valid for when considering a complex as an option.

IMPORTANT INFORMATION

The material enclosed in this guide is provided by Silver City Partners, Ltd. for informational purposes only and should not be construed as a recommendation or endorsement of any particular facility, management, staff, or service.

The information in Full Sail University's Housing Guide is for informational purposes only. Prices in the Housing Guide are estimates and may change at any time, without notice.

HOUSING DEPARTMENT

Full Sail University is committed to the needs of our students. We recognize the need for suitable housing, compatible roommates, home furnishings, and guidance for a successful relocation. The Housing Department was developed with those needs in mind. Our job is to help you make a smooth transition to the Winter Park area.

The Housing team has many years of experience preparing thousands of students for on-campus learning by tracking and guiding housing plans. We can assist in offering an array of housing and roommate options to help meet your goals with off-campus living arrangements.

This Housing Guide offers information regarding local Full Sail-friendly apartments. Included are rental rates at time of printing, information on deposits and pet fees, and general detail about the amenities each complex has to offer. The Housing Guide is updated every two months and is always posted on the Full Sail University website. Review this guide carefully and think about which complexes appeal most to you.

Begin with the Housing Process Checklist on the following page. This checklist outlines the common steps students will need to take in order to find their ideal living arrangements, choose a roommate, and move to the Winter Park area efficiently.

If you should wish to have a roommate(s), the Housing Coordinators will put you in touch with other Full Sail students with the same on-campus start date. You will then be able to connect with other enthusiastic students, get to know each other, and ultimately choose a roommate.

We look forward to having you at Full Sail University and will do all we can to help make your move as convenient as possible.

Amanda Solomon

Director of Housing Resources
amandas@fullsail.edu

Leia Willett

Housing Coordinator
awillett@fullsail.edu

800.226.7625 | 407.679.6333 | housing@fullsail.com

Hours Monday through Friday: 9:00 a.m. to 5:00 p.m. ET

2025 CAMPUS REGISTRATION AND START DATES

Mandatory Registration Date	Start/On-Campus Date	Housing Coordinator
January 6	January 6	Dwight
January 27	February 3	Leia
February 24	March 3	Amanda
March 31	April 7	Dwight
April 28	May 5	Leia
May 28	June 2	Amanda
June 23	June 30	Dwight
July 28	August 4	Leia
August 25	September 1	Amanda
September 22	September 29	Leia
October 20	October 27	Leia
November 17	November 24	Amanda

Table of Contents

Housing Department.....	3
Table of Contents	5
Housing Process Checklist	7
Providing Proof of Income	9
Housing Process Details	9
Frequently Asked Questions	10
Utilities Information.....	12
Student Safety.....	12
Apartments	15
1020 at Winter Springs	15
Adele Place	16
Alexan Mills 50	17
Alvista Winter Park	18
ARIUM Mission Bay	19
ARIUM Winter Park	20
Atlas at Winter Park	21
Avenues of Baldwin Park	22
Baldwin Harbor Apartments	23
Central Place at Winter Park	24
Cranes Landing	25
The Crossing at Winter Park	26
Elon Winter Park	27
Enders Place at Baldwin Park	28
Goldelm on Baldwin Park	29
Harper Grand	30
Indigo Winter Park	31
The Julian	32
Lakeside Villas	33
LIV at Winter Park	34
Oak Reserve	35
Maps	36
Onyx Winter Park	38
The Park at Rialto	39
Poste Winter Park	40
The Quad	41
River Park	42
Solis at Winter Park	43
Stonecastle	44
Summerlin at Winter Park	45
The Taylor	46
University Park Apartments	47
Vale East	48

Venue at Winter Park49
Villa Valencia50
Vintage Winter Park51
Westmount at Winter Park52
Whisper Lake53
Windrift Apartments54
Winter Park Woods55
Woodlands56
Homestay Anywhere	57
Rules and Regulations	58
Before You Begin Your Roomate Search	59
Suggestions for Interviewing Potential Roomates	60
Living with a Current Student	61
Important Numbers	63
Renters Insurance Agents	64
Area Retail Locations	65
Medical Facilities	66
Health Insurance Information	66
Transportation Services	67
Child Care Information	67
K-12 School Information	67
Important Dates	68
Living Expense Budget Worksheet	69

HOUSING PROCESS CHECKLIST

Your journey in determining your living arrangements begins with your Enrollment Guide Team to plan finances and ends with submitting your required Housing Status form. Follow each step carefully so we are able to work most efficiently together.

- 1. Your Admissions Representative and Enrollment Guides are your first points of contact before beginning your housing plans, but the Housing Department is happy to answer your questions at any time of your enrollment.
- 2. Thoroughly read your Housing Guide to establish a greater understanding of your relocation and housing plans. Begin by making a list of your favorite housing complexes from this guide.
- 3. Determine your financial plans for your tuition and living expenses with the Enrollment Guide Team. Having an established financial plan confirmed with your Enrollment Guide is the best way to inform the Housing Department to sensibly assist with your relocation plans.

Once funding has been approved with your Enrollment Guide Team, your name will automatically appear on the roommate list. If you would like to be excluded from the roommate list, please let your Enrollment Guide Team or Housing Coordinator know.

- 4. Connect with your Housing Coordinator to discuss your housing choices. We are happy to share information, insight, and even suggestions with you about different housing options.

Please note: Websites that review apartment complexes are neither wholly reliable nor accurate and should not be treated as dependable sources of information. The Housing Department, on the other hand, receives continuous feedback about the complexes in the area and is a sound source for Full Sail students.

- 5. It's important to let us know if you do not need a roommate. If you are looking for a roommate, contact your Housing Coordinator to complete your roommate profile. Once your profile is complete, you will begin receiving roommate lists to review and connect with. Students at Full Sail can choose their own roommates.

Please note: You must have your tuition and living expenses secured and confirmed with your Enrollment Guide Team prior to receiving a roommate list.

- 6. Once your housing choice has been discussed with your Housing Coordinator, you will be ready to connect with the leasing office of your choice. In speaking with the leasing agent, you will confirm the current rent amount and initial cost required to move in, establish the move-in date, and ask questions about the best lease lengths. All fees and deposits will be submitted directly to the complex.

- **7.** Contact the utility companies to arrange for service. Specific utility information will be provided by the apartment complex. Keep in mind that some apartments require renters insurance, too.
- **8.** If you require furniture, Cort (www.cort.com) offers student packages. Several places to purchase furniture are located nearby, including Cort.
- **9.** Approximately one week before you arrive, confirm your move-in date and time with your apartment complex and utility companies to verify that everything is ready for you to move in. Be aware, some complexes may only allow moving in to occur during certain hours.
- **10.** Finally, submit your Housing Status form on Full Sail One. All students are required to report their living arrangements to Full Sail regardless of whether they are moving or currently living in the area. Only submit this form once you have determined the address of your housing/apartment. Be certain to include your move-in date and first and last name of your roommate(s). Please call the Housing Department if you have any questions or difficulty submitting this form through Full Sail One. This Housing Status form is due before your on-campus registration date and is typically the final enrollment form submitted by students.

PROVIDING PROOF OF INCOME

All apartment complexes have certain eligibility requirements that students must meet in order to be approved for an apartment. Every student must undergo:

- **Proof of income.** Students and parents must be able to demonstrate that they earn three to five times the rent to be approved. Most students need cosigners (parents, grandparents, aunts/uncles, etc.) to prove income. Some complexes will consider an Estimated Award Letter (provided by your Enrollment Guide). It shows that the student is drawing living expenses from their loans.
- **A criminal background check.** Students with felony charges and certain misdemeanors are unable to rent apartments.
- **A credit check.** Most complexes have similar credit standards that students must meet.

Providing Proof of Income Without Student Aid or Cosigner

Students who do not receive student or government aid must meet one of the following criteria for proof of income.

Pay stubs: You are required to meet the minimum gross income of three times the monthly market rent. To enable the apartment complex to verify your income, you will need to provide copies of your three most recent local pay stubs or a letter from your employer if you recently started a job.

Tax return: If you do not have pay stubs because you are a business owner, you may provide the complex with a copy of your most recent tax returns or a letter or statement from a certified public accountant that confirms your monthly income.

Bank statement: Some complexes will ask for three or six recent and consecutive bank statements or investment statements to verify your monthly income.

Offer letter: If you are relocating and already have employment, you will need to provide an offer letter with your new employer's information. The letter must include the following:

- The company name on the letterhead
- The position you were hired for
- Your salary and start date

The complex will also require you to provide the name of a contact person to verify that the information is correct.

No current employment: Requirements for renting an apartment without proof of employment vary, so be sure to ask the apartment complex or property manager what is required.

HOUSING PROCESS DETAILS

****IMPORTANT – PLEASE READ****

For Parents

The Full Sail University Housing Department presents expert relocation information. Just as you have been very involved with the admissions and financial aid processes, we encourage you to stay involved during the housing process.

The first step in securing housing for your student is to contact your Enrollment Guide Team. They will answer all of your funding questions and provide you with a budget worksheet that will help you estimate monthly living expenses. After speaking with your Enrollment Guide Team, contact the Housing Department to discuss your student's accommodations. We look forward to helping you successfully transition your student to Full Sail!

FREQUENTLY ASKED QUESTIONS

How do I find housing?

You should look to this guide and your Housing Coordinator as your primary sources through your housing search. The Housing Guide provides all the Full Sail–friendly housing options that have a working relationship with the Housing Department. Other housing options do exist in the Winter Park area that are not included in this guide; we have taken strides to ease your search by vetting complexes that will best align with the considerations of our students. We recommend leveraging the expertise and guidance of the Housing team to find the housing options that meet your needs. We're here to provide you with suggestions and insight on housing in the area, and we can even help you make contact with apartments if needed.

Can I visit or tour any of these apartment complexes?

Absolutely. Students who already reside in the Winter Park area can visit apartments during their open office hours. Tours are conducted by the leasing staff of each apartment complex. You can call ahead to schedule a tour, but many apartments will allow walk-in tours as well. We encourage students and parents to contact their Housing Coordinator before taking a tour for a chance to talk over some of their identified options.

Those who are not able to tour in person may be able to take virtual tours, which are provided by some apartment complexes as well. Check out the direct website for each apartment provided in this guide. There, you'll be able to see more pictures and even 3-D models of some floor plans.

Can the Housing Department help me find a roommate?

Yes. The Housing Department has a program in which students are able to pick their own roommate(s). The first step will be to have your financial plans completed and confirmed by your campus Enrollment Guide Team. Once your financial plans are complete, your name will automatically appear on the roommate list. The next step will be to have your roommate profile created. Connect with your Housing Coordinator to complete a roommate profile about yourself and gain access to the roommate list.

If you are not looking for a roommate, let your Admissions or Housing representative know so your name will be excluded from the list.

Can I live with someone I already know?

Yes. With housing being off campus for Full Sail, students are allowed to live with anyone they wish and still make use of the housing options presented in this guide. This might include your family, friends, or perhaps a fellow Full Sail student you already know. Make sure the person you are living with has a solid plan to cover their share of rent. When sharing a lease with someone, regardless if they are a family member or friend, you will need feel be assured that any roommates you choose are going to be dependable and will respect your time here as a student.

What about housing options not in the Full Sail Housing Guide?

Full Sail students have the choice to live where they feel most comfortable. The apartments listed in this guide have partnered with our department and are committed to providing a safe and comfortable place to live. A partnered leasing office can work with our team to resolve many issues—this team dynamic is not in place with properties that are not listed in this guide.

Some properties are not listed in this guide because they were not determined to be suitable for our students' considerations. We advise someone evaluating housing options outside what is presented in this guide to still contact our department to gain our insight on the property or area.

Some students might consider renting or purchasing a house. Keep in mind the advantages of apartment living for a busy college student, including on-site office staff, on-site maintenance, on-site fitness centers, pest control, and the lack of lawn care and other property obligations.

How do utilities work?

The apartment of your choice will provide the utility and internet services that their community uses after you have been approved. Electricity is usually required to be in the resident's name(s) before they can get their keys. Most apartments only have one internet service provider available, and then it is up to the resident to choose a package that most aligns with their needs.

Do I need a car?

No. A car is not required as long as a student lives within walking or biking distance from campus. We suggest living in an apartment within 1.5 miles from campus for walking or within 2 miles for those with a bike, skateboard, or scooter. Full Sail students will find all the necessary amenities they need within a mile of campus. This includes grocery and department stores, banks, a post office, urgent care centers, and more.

Do apartments come furnished?

Many apartments will come unfurnished, but all have the option to be furnished upon arrival through a third-party rental company. Most apartments in the area use the company Cort, which offers different furnishing packages for rent or sale. See more information on Cort in the end portion of this guide. There are only a few partnered housing options that come furnished or partially furnished; this information will be specifically indicated within the Amenities section on their page of this guide.

Are pets allowed?

Most apartments are pet friendly, but many have restrictions on the size, number, and/or breed of animal. Refer to each apartment's page for their pet policies. Pet fees are required for non-service animals and differ for each location.

Think hard before deciding to bring your pet with you to Full Sail. Full Sail students are kept very busy with classes, labs, and outside projects. You want to ensure your pet gets the love and attention they require and deserve.

What if I'm an international student?

Your best resource for your relocation plans is your International Admissions team and the International Housing Guide (<https://www.fullsail.edu/resources/brochure-file/international-housing-guide.pdf>). Some apartments complexes have slightly different approval requirements for international residents. The Housing Handbook for International Students provides more information on requirements as well as housing options hand-selected by the International team for best suitability.

What if I have a prior offense on my record?

All apartment complexes perform criminal background checks on prospective tenants. Misdemeanors are often evaluated on a case-by-case basis and differ for each rental company. Most often, those applicants with a felony will be declined. If you have concerns that any past criminal history will appear on your background check, contact your Housing Coordinator for guidance or possible alternate housing options.

UTILITIES INFORMATION

Electric Power

Duke Energy serves the Winter Park area. A \$15 connection fee is required. A free credit screening is offered through Experian to determine if the deposit may be waived. Florida Power Corporation requires 24 hours notice for the connection of new service. For additional information, contact Customer Service at 407.629.1010 or 800.700.8744 Monday through Friday from 7:00 a.m. to 9:00 p.m. (ET).

Orlando Utilities Commission serves the Orlando area. The deposit may be waived after completion of a credit screening through Experian. Orlando Utilities requires 24 hours notice for the connection of new service. For additional information, contact Customer Service at 407.423.9100.

Electricity is usually not included in the rent. The actual costs depend upon your living habits, apartment size and the season. Power bills in Florida are generally higher in the summer.

STUDENT SAFETY

Whether this is your first college experience or you are a seasoned student, all students and their parents should keep basic safety precautions in mind when preparing for college. Full Sail takes crime prevention and education seriously. Below are some helpful tips for navigating safely as a student.

Walking

Be aware of your surroundings at all times when traveling by foot. When possible, try to walk in groups off campus. If walking is your main means of transportation, it is likely that you will have classmates living at the same or nearby apartment complexes whom you could walk with. You will often find many other Full Sail students walking around the neighborhood surrounding campus.

- When traveling, know your destination and plan your route of travel. You should also remove your Full Sail ID and lanyard when you leave campus.
- If you are not able to walk in a group, keep common-sense safety in mind. Some tips include:
 - Be observant and alert. Avoid using your cell phone and remove headphones that can keep you from recognizing external cues.
 - Trust your instincts. If you see something, say something. If you sense trouble, get away as soon as possible.
 - Keep valuable equipment out of sight in a book bag or purse.

In Your Car

Students with vehicles are provided a Full Sail parking pass hangtag. Keep it visible when parking on campus to assert your official status. However, you should always remove the hangtag when you are not on campus to avoid advertising yourself as a college student who may be toting valuable gear. Some helpful tips include:

- Keep your car doors locked. The majority of vehicle break-ins target unlocked cars.
- Remove or keep valuable equipment hidden in your car, both on and off campus. Removing valuable items from your car reduces the chance of break-ins while also preventing damage from the Florida sun.
- Make sure to check with your car insurance company for a good understanding of your policies. Note that some car insurance companies can add renters insurance onto your plan.

At Home

For many students, this may be your first time living on your own and in your own place. Some students may be new to a larger city like the Orlando Metropolitan area and the busy college area where Full Sail University is located. Remember that it never hurts to be overly cautious. The following are some things to consider:

- Make sure to lock the doors of your apartment, whether you are at home or away. This includes any sliding glass doors for apartments that have patios.
- Do not allow strangers into your residence—even if they are hurt or say they need help. Keep the door locked and call the police for them.
- At times, you may want to invite classmates home or host social gatherings. Limit the number of people you allow into your apartment to those you or your roommate know and trust.
- Obtain renters insurance. This is a very inexpensive way to safeguard your belongings. Some apartments will require a minimum amount in liability coverage, but that alone will not cover your personal belongings. Make sure to calculate the value of your personal items, including your new LaunchBox™ equipment, with your plan.
- It is recommended that you take inventory and photograph all your valuable belongings—including documenting their make, model, and serial numbers—for insurance purposes.

LaunchBox™

All students are provided LoJack Theft Recovery three-year subscription with their LaunchBox™ laptop. Students will need to set up the software and an account for it to work. Do this right away!

If you observe any suspicious persons, vehicles, or activities, or if you are the victim of a crime, notify the police immediately.

In many cases, time is of the essence, and even a short delay can be detrimental to an investigation. Do not leave the scene of a crime unless it is unsafe or you need immediate help. Many times, the police will need to observe the exact location of the crime.

Title IX

Full Sail University complies with the guidelines and requirements of Title IX, Educational Amendments of 1972 and has adopted procedures and policies to address allegations of sexual violence as outlined under Title IX. The university encourages any student who experiences sexual violence/harassment to report it and request appropriate interim measures and remedies. The university will offer services and processes that provide access to the educational program without regard to sex. The university prohibits sexual violence/harassment occurring off campus, as well as on campus, in accordance with Title IX.

Title IX is a federal law that prohibits sex-based discrimination in all activities and programs of educational institutions receiving federal funds.

UNLAWFUL DISCRIMINATORY BEHAVIORS UNDER TITLE IX

- SEXUAL HARASSMENT (unwelcome sexual advances, requests for sexual favors, and other verbal or physical conduct of a sexual nature)
- SEXUAL MISCONDUCT (rape, sexual assault, sexual battery, sexual exploitation, and other forms of non-consensual sexual activity)
- STALKING (repeatedly following, harassing, threatening or intimidating including by telephone, mail, electronic communication, or social media)
- DATING VIOLENCE (including emotional, verbal, and economic abuse without the presence of physical abuse)

- DOMESTIC VIOLENCE (including emotional, verbal and economic abuse without the presence of physical abuse)
- RETALIATION (adverse employment, academic, or other actions against anyone reporting or participating in an investigation of Title IX allegations)

REPORTING PROHIBITED BEHAVIOR

Members of the university community who believe that a Title IX violation may have occurred should discuss their concerns and/or file a complaint with the university's Title IX Coordinator:

Shayne Cade, Director of Compliance & Title IX Coordinator
3300 University Boulevard
Winter Park, FL 32792
407.679.0100
scade@fullsail.com

University Title IX Deputy Coordinators are:

Debbie Mills, Director of Student Affairs
3300 University Boulevard
Winter Park, FL 32792
dmills@fullsail.com

Elaine Saunders, Director of Human Resources
3300 University Boulevard
Winter Park, FL 32792
elaine.saunders@fullsail.edu

For more information on Title IX and a copy of the university's Title IX Complaint form, please visit the following address: <https://www.fullsail.edu/resources/brochure-file/title-ix-complaint-form.pdf>

1020 at Winter Springs

1020 Chatham Pines Cir., Winter Springs, FL 32708
407.699.6886

WEBSITE

www.1020atwinterspringsfl.com

UTILITIES AND FEATURES

- Washer/dryer included in every apartment
- Reserved parking available

AMENITIES

- Modern interior design
- Full-size closets
- Fireplace with mantel
- Exercise center
- Private patio
- Swimming pool
- Picnic and BBQ area
- Basketball court
- Business center

LOCATION

Located off of Red Bug Lake Rd., 6 miles northeast of campus

APPLICATION FEES

\$50 application fee for Full Sail students

MOVE-IN COSTS

\$300 to 1 month's rent (refundable) security deposit for Full Sail students

PET DEPOSITS/FEES

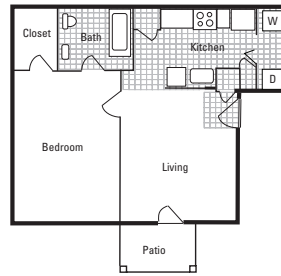
\$500 (non-refundable) pet fee per pet
Maximum of 2 pets
\$25/month pet rent per pet
75 lb. weight limit
Breed restrictions apply

ADDITIONAL INFORMATION

Mention this ad for Full Sail specials

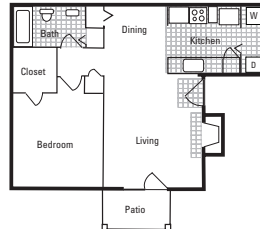
HOURS

M-F	9 to 6	Sat	10 to 5
		Sun	Closed



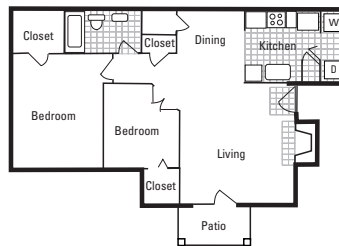
1 Bedroom

1 Bedroom, 1 Bath
580 sq. ft.
Starting at \$1430



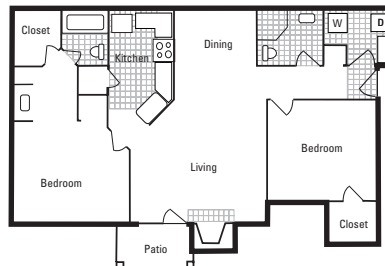
1 Bedroom

1 Bedroom, 1 Bath
660 sq. ft.
Starting at \$1485



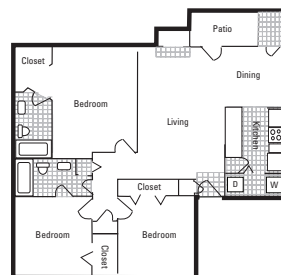
2 Bedroom

2 Bedroom, 1 Bath
810 sq. ft.
Starting at \$1629



2 Bedroom

2 Bedroom, 2 Bath
1000 sq. ft.
Starting at \$1724



3 Bedroom

3 Bedroom, 2 Bath
1150 sq. ft.
Starting at \$1980

Adele Place

7595 Sun Tree Cir., Orlando, FL 32807
407.362.6511 407.658.9473 fax

WEBSITE AND EMAIL

www.adeleplaceorlando.com
adele_place@aspensquare.com

UTILITIES AND FEATURES

- Water/sewer/trash not included in rent
- Pest control included in rent
- Washer/dryer included in every apartment
- Reserved parking available for \$20/month
- Reserved storage available for \$60/month

AMENITIES

- Resort-style pool with Wi-Fi
- Sports center with basketball court and X-Fit gym
- Dog park
- Pickleball court
- 24-hour fitness center
- Internet café
- Yoga studio
- Screened-in porches and balconies
- Amazon locker rooms

LOCATION

Located off of Goldenrod Rd., 4 miles south of campus

APPLICATION FEES

\$100 per applicant/guarantor—half off for Full Sail students

MOVE-IN COSTS

\$200 administrative fee—half off for Full Sail students
Security deposit starting at \$400 (refundable)

PET DEPOSIT/FEES

\$350–600 pet fee, up to 2 pets
\$20–40/month pet rent
Breed restrictions apply

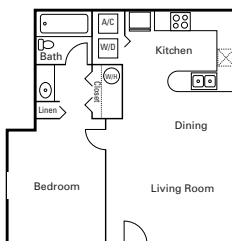
ADDITIONAL INFORMATION

Credit cards accepted with a \$24.99 fee per transaction

HOURS

M–F	8 to 6	Sat	10 to 4
		Sun	Closed

**Prices change daily based on current market availability. Please call complex for current pricing. Refer to Apartment Information section at the front of the guide for more info.*

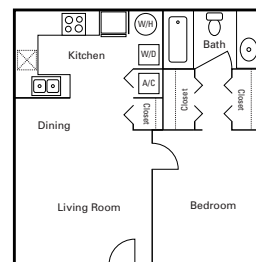


Royal

1 Bedroom, 1 Bath

550 sq. ft.

Starting at \$1295*

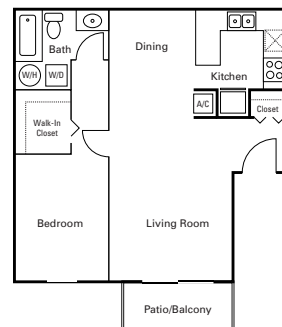


Carolina

1 Bedroom, 1 Bath

567 sq. ft.

Starting at \$1330*

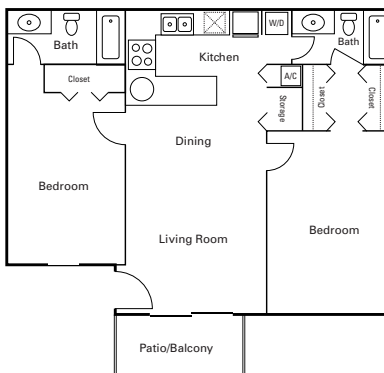


Bella

1 Bedroom, 1 Bath

658 sq. ft.

Starting at \$1475*



Cape

1 Bedroom, 1 Bath

792 sq. ft.

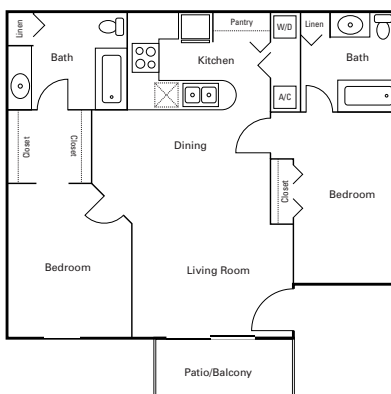
Starting at \$1499*

Tuscany

2 Bedroom, 2 Bath

927 sq. ft.

Starting at \$1724*



Grande

2 Bedroom, 2 Bath

938 sq. ft.

Starting at \$1789*

Alexan Mills 50

1647 E. Colonial Dr., Orlando, FL 32803
407.225.8250

WEBSITE

<https://alexanmills50apartments.com>
leasing@alexanmills50.com

UTILITIES AND FEATURES

- Water/sewer not included in rent
- Pest control \$5/month
- Non-valet trash \$30/month
- AT&T Internet \$70/month

AMENITIES

- Saltwater pool
- Art studio
- Production studio
- Work pods
- Creative pods
- Pet spa and pet park
- Clubroom
- Outdoor grills
- 24-hour fitness center
- Covered garage parking

LOCATION

Located off of E. Colonial Dr., 6.5 miles southwest of campus

APPLICATION FEES

\$250 administrative fee per apartment—waived for Full Sail students

\$75 application fee per person, including roommates and guarantors—waived for Full Sail students

Both of these fees are required to be paid to complete the application

MOVE-IN COSTS

\$500 (refundable) security deposit

PET DEPOSITS/FEES

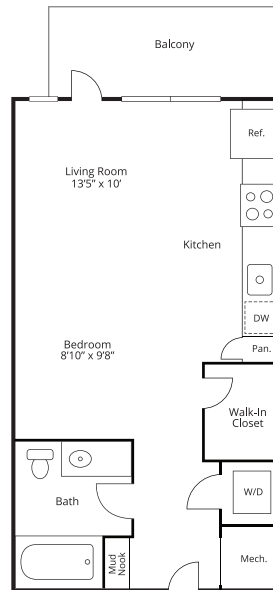
\$500 pet fee per pet, up to 2 pets

\$25/month pet rent per pet

Breed restrictions may apply

HOURS

M-F	9 to 6	Sat	10 to 5
		Sun	1 to 5

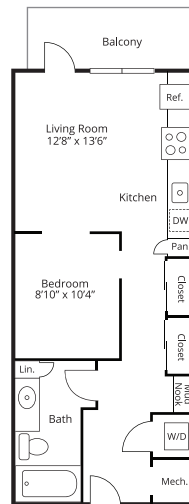


Dali

Studio

503 sq. ft.

Starting at \$1635

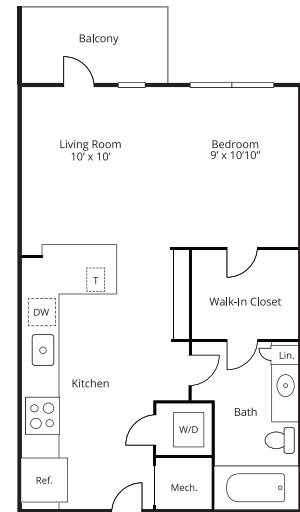


Da Vinci

Studio

603 sq. ft.

Starting at \$1790

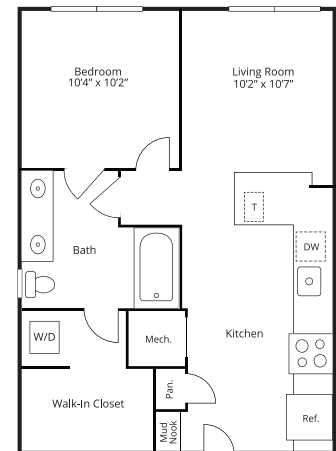


Degas

Studio

603 sq. ft.

Starting at \$1665



Picasso

1 bedroom/1 bath

661 sq. ft.

Starting at \$2035

Alvista Winter Park

3935 Sutton Place Blvd., Winter Park, FL 32792
407.657.2299 407.657.0295 fax

WEBSITE AND EMAIL

www.alvistawinterpark.com
alvistawinterpark@willowbridge.com

UTILITIES AND FEATURES

- Water/sewer not included in rent
- Valet trash \$25/month
- Pest control \$3/month
- Washer/dryer included in the Beechnut and Destiny floor plans and select Amelia and Camelia floor plans
- Renters insurance required

AMENITIES

- Gated community
- 24-hour state-of-the-art fitness center
- Sparkling pool
- 2 dog parks
- 24-hour emergency maintenance
- High-speed Wi-Fi in clubhouse
- 24-hour laundry facility with key access (card)
- Tennis/pickleball court
- Track
- Rock climbing wall
- Sand volleyball court
- Microwave included
- Green screen studio

LOCATION

Located on University Blvd., approximately 0.8 miles east of campus

APPLICATION FEES

\$75 per applicant/guarantor

MOVE-IN COSTS

\$200 (non-refundable) administration fee
\$200 minimum (refundable) security deposit with approved credit

PET DEPOSITS/FEES

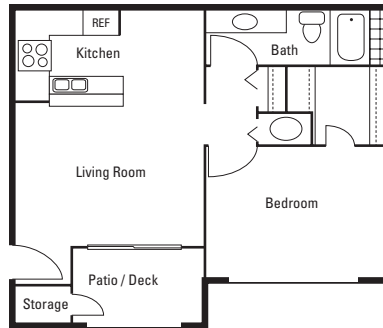
\$350 pet deposit for 1 pet; \$450 for 2 pets
\$20/month pet rent
Breed restrictions apply

ADDITIONAL INFORMATION

Online payments accepted via credit card or bank account

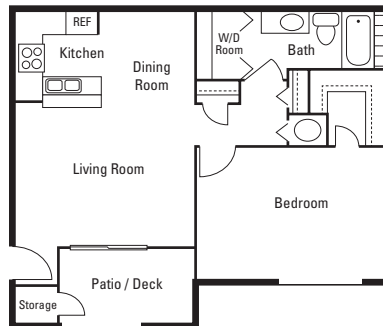
HOURS

M-F	8:30 to 5:30	Sat	10 to 5
		Sun	Closed



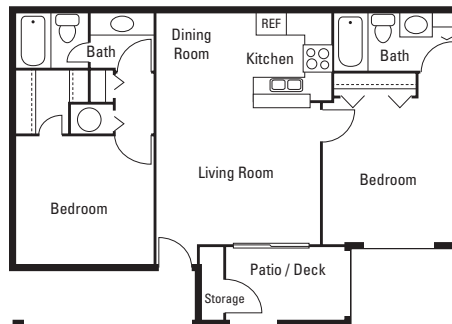
Amelia

1 Bedroom, 1 Bath
675 sq. ft.
Starting at \$1250*



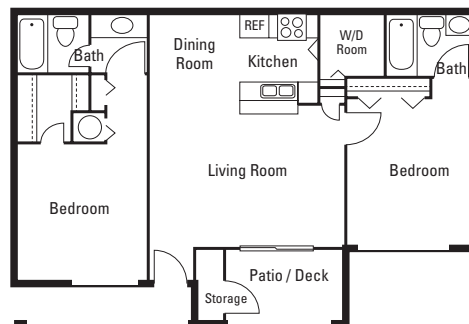
Beechnut

1 Bedroom, 1 Bath
837 sq. ft.
Starting at \$1425*



Camelia

2 Bedroom, 2 Bath
940 sq. ft.
Starting at \$1540*



Destiny

2 Bedroom, 2 Bath
1042 sq. ft.
Starting at \$1650*

**Prices change daily based on current market availability. Please call complex for current pricing. Refer to Apartment Information section at the front of the guide for more info.*

ARIUM Mission Bay

3378 Mission Lake Dr., Orlando, FL 32817
407.863.7071

WEBSITE AND EMAIL

www.ARIUMMissionbay.com
ARIUMMissionBay@ariumliving.com

UTILITIES AND FEATURES

- Water/sewer varies monthly
- Pest control \$3/month
- Trash \$37/month
- Trash/water administration fee \$6/month

AMENITIES

- 24-hour fitness center
- 2 BBQ grill stations
- Package center
- Swimming pool
- Pet park
- Tennis court
- Racquetball court
- Garages in select units
- Fireplaces in select units
- Lake views in select units
- Garden tubs
- Ceiling fans
- Washer/dryer
- Spacious closets

LOCATION

Located off of University Blvd., 4 miles east of campus

APPLICATION FEES

\$75 application fee
\$200 administration fee
\$75 guarantor/cosigner fee
Fees above waived for Full Sail students

MOVE-IN COSTS

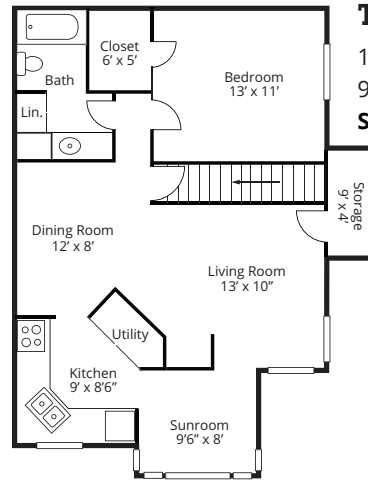
\$75 one-time amenity fee
Minimum of \$500 security deposit with approved credit

PET DEPOSITS/FEES

\$300 pet fee per pet
\$20/month pet rent per pet

HOURS

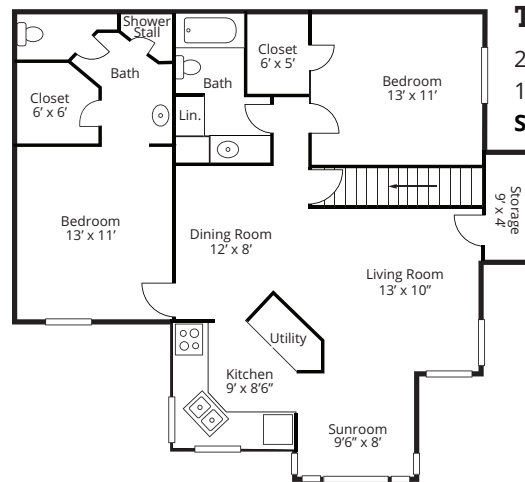
M-F	9 to 6	Sat	10 to 5
		Sun	Closed



The Amelia

1 Bedroom, 1 Bath
900 sq. ft.

Starting at \$1423-2000*



The Bermuda

2 Bedroom, 2 Bath
1128 sq. ft.

Starting at \$1377-2302*

**Prices change daily based on current market availability.
Please call complex for current pricing. Refer to Apartment
Information section at the front of the guide for more info.*

ARIUM Winter Park

3250 Bishop Park Dr., Winter Park, FL 32792
407.606.6946

WEBSITE AND EMAIL

www.ARIUMWinterpark.com
leasing.wrp@ariumliving.com

UTILITIES AND FEATURES

- Valet trash \$44/month
- Pest control \$3/month
- Utility collection \$6/month
- Water/sewer varies monthly

AMENITIES

- 24-hour gym
- Pool
- Basketball court
- Dog park
- 24-hour laundry facility
- Work-study lounge
- Game room
- Lake views
- Walk-in closets
- Garden-style tubs
- Garages
- Washer/dryer
- Patios
- Ceiling fans
- Amazon hub
- Car care center
- Floor-to-ceiling windows

LOCATION

Located off of Semoran Dr., 1.4 miles north of campus

APPLICATION FEES

\$125 application fee
\$250 administration fee
Fees above waived for Full Sail students

MOVE-IN COSTS

\$110 amenity fee
Minimum of \$500 security deposit with approved credit and rental verification
\$25 fee per gate card

PET DEPOSITS/FEES

\$300 pet fee per pet, up to 2 pets
\$20/month pet rent per pet

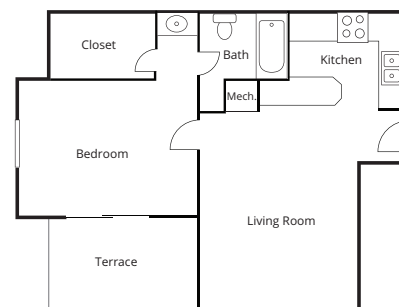
HOURS

M-F	9 to 6	Sat	10 to 5
		Sun	Closed

The Knight

1 Bedroom, 1 Bath
660 sq. ft.

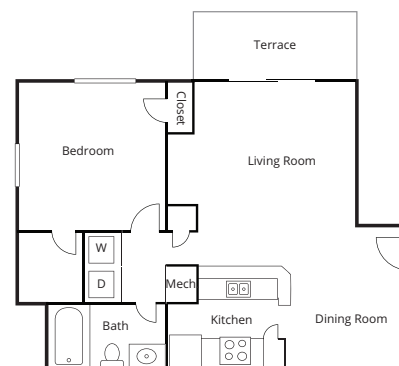
Starting at \$1280*



The Bishop

1 Bedroom, 1 Bath
770 sq. ft.

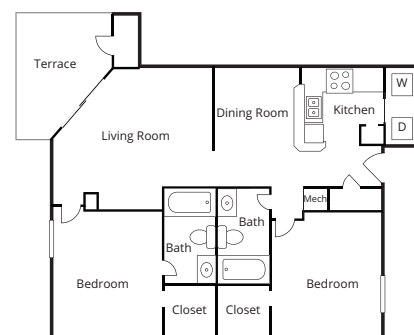
Starting at \$1637*



The King

2 Bedroom, 2 Bath
1100 sq. ft.

Starting at \$1738*



**Prices change daily based on current market availability. Please call complex for current pricing. Refer to Apartment Information section at the front of the guide for more info.*

Atlas at Winter Park

3733 N. Goldenrod Rd., Winter Park, FL 32792
407.677.7070

WEBSITE

www.liveatlasatwinterpark.com

UTILITIES AND FEATURES

- Water/trash/sewer not included in rent
- Pest control included in rent
- Trash \$20/month
- Full-size washer/dryer in every apartment
- Renters insurance required—in-house policy available for \$15/month

AMENITIES

- Some newly renovated units
- Gated 24 hours/day
- 2 sparkling pools with sundecks
- Newly renovated 24-hour fitness center
- Lighted tennis court
- Pickleball court
- Dog park with agility course
- Picnic areas
- Wi-Fi at the clubhouse pool
- Fireplaces in select units

LOCATION

Located on Goldenrod Rd., 1 mile east of campus

APPLICATION FEES

\$75 application fee per applicant
\$250 administration fee per household

SECURITY DEPOSITS

\$500 or up to 1 month's rent

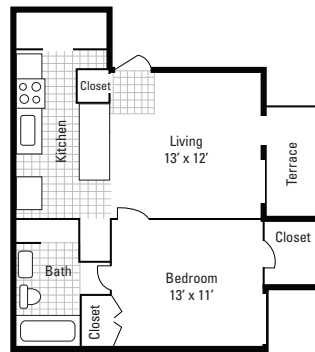
PET DEPOSITS/FEES

\$435 pet fee per pet, up to 2 pets
\$25/month pet rent
No aggressive breeds permitted

HOURS

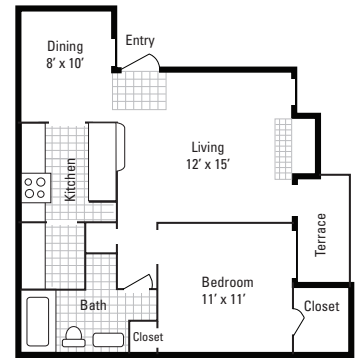
M-F	9 to 6	Sat	10 to 5
		Sun	Closed

**Prices change daily based on current market availability. Please call complex for current pricing. Refer to Apartment Information section at the front of the guide for more info.*



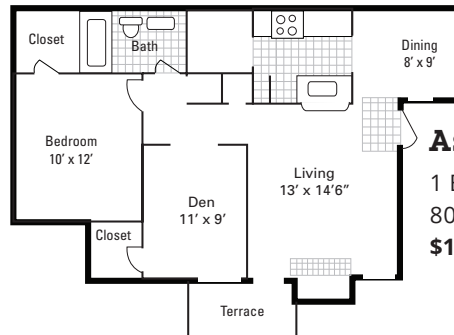
Palm

1 Bedroom, 1 Bath
579 sq. ft.
\$1168-1850*



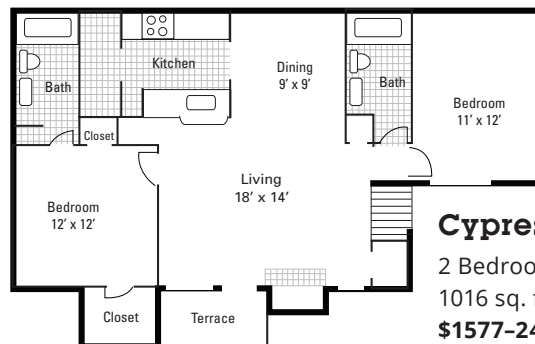
Beechnut

1 Bedroom, 1 Bath
657 sq. ft.
\$1306-1610*



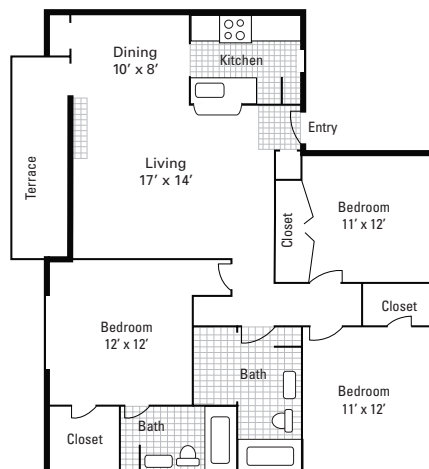
Aspen

1 Bedroom, 1 Bath w/Den
808 sq. ft.
\$1345-1759*



Cypress

2 Bedroom, 2 Bath
1016 sq. ft.
\$1577-2443*



Willow

3 Bedroom, 2 Bath
1150 sq. ft.
\$1928-2645*

Avenues of Baldwin Park

5800 Auvers Blvd., Orlando, FL 32807
407.671.0200 407.671.0968 fax

WEBSITE AND EMAIL

www.avenuesbaldwinpark.com
baldwinpark@hrpliving.com

UTILITIES AND FEATURES

- Water/sewer/trash not included in rent
- Washer/dryer included in every apartment
- Valet trash \$32/month
- Required Internet/cable package \$99/month
- Pest control \$7/month
- Liability insurance required \$24.99/month

AMENITIES

- Courtesy officers on-site
- Newly remodeled clubhouse with billiard room open during business hours
- 3 swimming pools with outdoor kitchens
- Soccer field with track and basketball court
- Bark park
- 24-hour fitness center
- 24-hour emergency maintenance
- Amazon locker room
- Brand-new playground
- Screened patios and storage in all units
- Townhome-style floor plans in select units
- Partially and fully renovated apartments available

LOCATION

Located off of Semoran Blvd., 1.6 miles south of campus

APPLICATION FEES

\$79 per applicant/guarantor

MOVE-IN COSTS

\$250 administrative fee
Up to 2 month's rent security deposit based on credit or \$650 flat fee

PET DEPOSITS/FEES

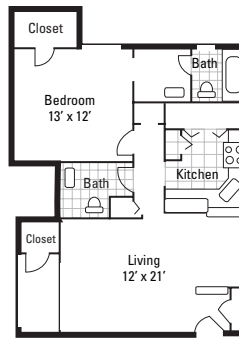
\$350-500 pet fee, up to 2 pets
\$25/month pet rent per pet
Breed restrictions apply

ADDITIONAL INFORMATION

Online rent payments with checking/debit or credit card

HOURS

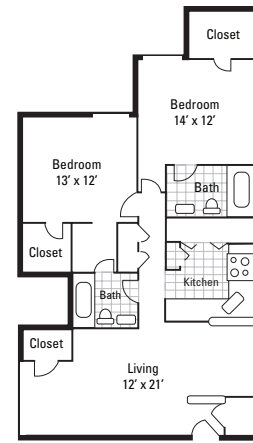
M-F	9 to 6	Sat	10 to 4
		Sun	Closed



The Fern

1 Bedroom, 1½ Bath
784 sq. ft.

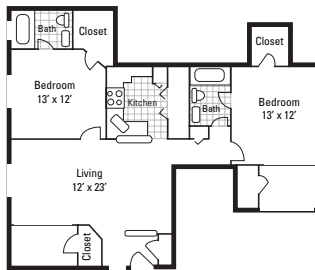
Starting at \$1436*



The Anson

2 Bedroom, 2 Bath
1023 sq. ft.

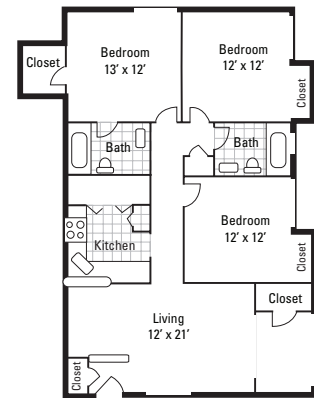
Starting at \$1636*



The Park

2 Bedroom, 2 Bath
1030 sq. ft.

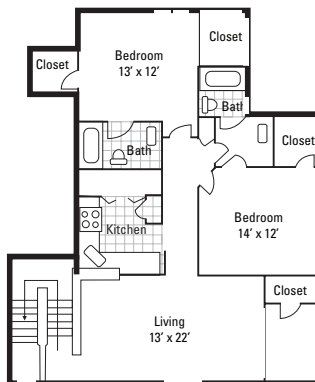
Starting at \$1511*



The Meeting

3 Bedroom, 2 Bath
1141 sq. ft.

Starting at \$1703*



The Union

2 Bedroom, 2 Bath
1163 sq. ft.

Starting at \$1596*

**Prices change daily based on current market availability.
Please call complex for current pricing. Refer to Apartment
Information section at the front of the guide for more info.*

Baldwin Harbor Apartments

1780 Welham St., Orlando, FL 32814
407.745.4204

WEBSITE AND EMAIL

<https://www.baldwinharbororlando.com>
baldwinharbor@zrsmanagement.com

UTILITIES AND FEATURES

- Trash \$18/month (2 trash chutes on each floor)
- 1 garage parking spot included in rent for 1- and 2- bedroom apartments
- 2 garage parking spots included in rent for 3-bedroom apartments
- Additional spots \$75/month
- Select first-story units include private yards
- Additional floor plans available
- Fetch package delivery \$20/month

AMENITIES

- 2 resort-style pools
- Clubhouse
- Outdoor lounges
- Yoga courtyard
- Dog spa
- 2 24-hour fitness and cardio centers
- Garage parking and controlled building access

LOCATION

Located off of Jake St., 4.1 miles southwest of campus

APPLICATION FEES

\$75 per applicant/guarantor

MOVE-IN COSTS

\$300 administration fee
Security deposit starting at \$1000 based on credit

PET DEPOSITS/FEES

\$450 pet fee per pet, up to 2 pets
\$30/month pet rent per pet

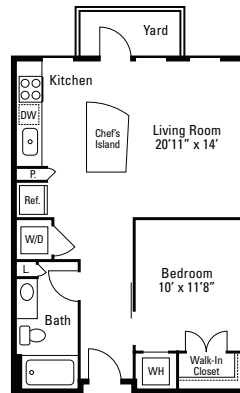
ADDITIONAL INFORMATION

Virtual tour available on the website

HOURS

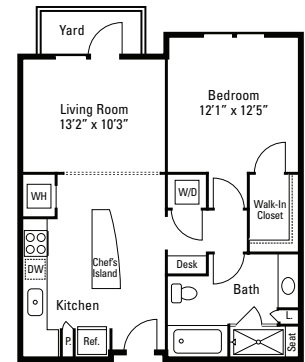
M-F	10 to 6	Sat	10 to 5
		Sun	1 to 4

**Prices change daily based on current market availability. Please call complex for current pricing. Refer to Apartment Information section at the front of the guide for more info.*



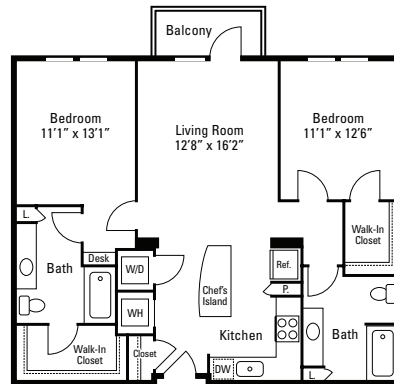
A1

1 Bedroom, 1 Bath
647-668 sq. ft.
Starting at \$2180*



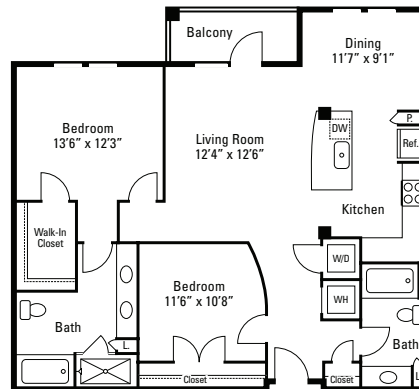
A2

1 Bedroom, 1 Bath
755 sq. ft.
Starting at \$2258*



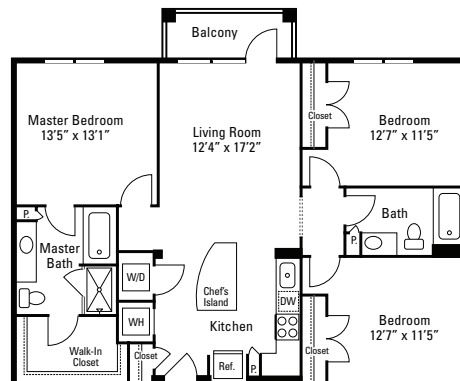
B1

2 Bedroom, 2 Bath
1077 sq. ft.
Starting at \$2778*



B5

2 Bedroom, 2 Bath
1208 sq. ft.
Starting at \$3112*



C1

3 Bedroom, 2 Bath
1257 sq. ft.
Starting at \$4240*

Central Place at Winter Park

7000 University Blvd., Winter Park, FL 32792
407.678.2662 407.677.5591 fax

WEBSITE AND EMAIL

www.centralplaceatwinterpark.com
centralplace@robbinsre.com

UTILITIES AND FEATURES

- Flat rate for water/sewer/package center based on apartment size
- Valet trash \$40/month
- Washer/dryer in all 2- and 3-bedroom apartments
- Asset Protect \$14/month (required)

AMENITIES

- Free Wi-Fi lounge
- Business center open 9 to 6
- 2 sparkling pools
- 24-hour fitness center
- Lighted basketball court
- Lighted pickleball court
- 2 24-hour card-operated laundry facilities
- Smoke-free community
- 24-hour package center
- Dog walk with agility equipment

LOCATION

Located on University Blvd., 0.6 miles east of campus

APPLICATION FEES

\$25 for students/military/government employees
\$75 per applicant and guarantor

MOVE-IN COSTS

\$175 (non-refundable) administration fee per lease
\$200 to 1 month's rent (refundable) security deposit based on approved credit

PET DEPOSITS/FEES

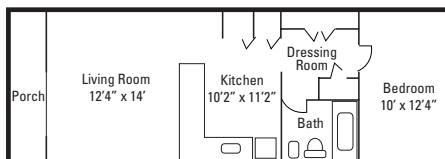
\$250 pet deposit (waived if added to renters insurance)
\$325 pet fee for 1 pet; \$500 for 2 pets
\$25/month pet rent per pet, up to 2 pets
Breed restrictions apply

ADDITIONAL INFORMATION

Online payments accepted via credit, debit, and e-check

HOURS

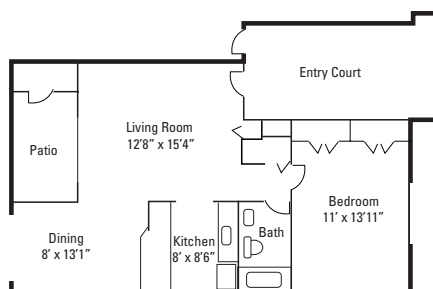
M-F	9 to 6	Sat	10 to 5
		Sun	Closed



A1

1 Bedroom, 1 Bath
550 sq. ft.

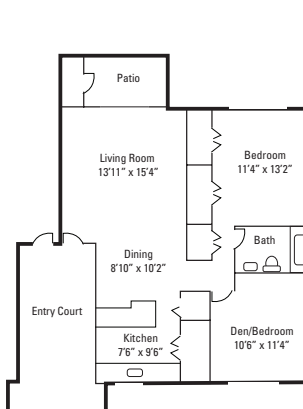
Starting at \$1290*
\$145 flat rate for water/sewer/package center



A2

1 Bedroom, 1 Bath
712 sq. ft.

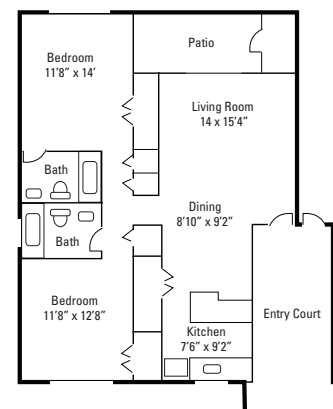
Starting at \$1440*
\$146 flat rate for water/sewer/package center



B1

2 Bedroom, 1 Bath
911 sq. ft.

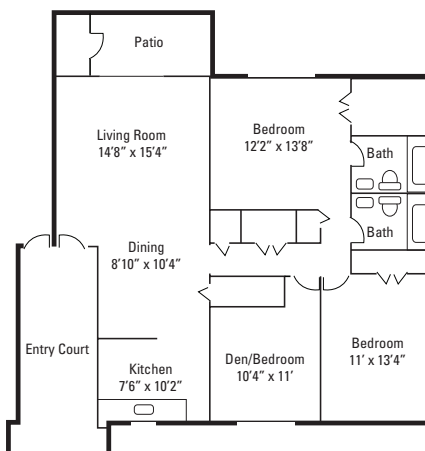
Starting at \$1555*
\$154 flat rate for water/sewer/package center



B2

2 Bedroom, 2 Bath
987 sq. ft.

Starting at \$1830*
\$160 flat rate for water/sewer/package center



C1

3 Bedroom, 2 Bath
1178 sq. ft.

Starting at \$2040*
\$163 flat rate for water/sewer/package center

**Prices change daily based on current market availability.
Please call complex for current pricing. Refer to Apartment Information section at the front of the guide for more info.*

Cranes Landing

3440 N. Goldenrod Rd., Winter Park, FL 32792
407.917.8526

WEBSITE AND EMAIL

www.craneslandingapts.com/
craneslandg@hrpliving.com

UTILITIES AND FEATURES

- Water/sewer/trash not included in rent
- Washer/dryer in every apartment
- Pest control \$7/month
- Parcel package lockers \$7/month
- Valet trash \$32/month
- Required liability waiver \$25/month
- RentPlus \$8.95/month per applicant (optional)
- Cable/Internet package \$99/month
- Compactor fee \$10/month
- Storm water fee \$6/month
- Select units are renovated

AMENITIES

- 2 pools and 4 grill stations
- Business center with Apple bar open during business hours
- Sand volleyball court and outdoor fitness area
- Clubhouse with pool table, Xbox gaming station, and free Wi-Fi (open during business hours)
- 24-hour fitness center
- Walk-in closets in every bedroom
- Coffee bar
- Bark park

LOCATION

Located off of Goldenrod Rd., 1.5 miles east of campus

APPLICATION FEES

\$79 per applicant/guarantor
\$250 administration fee

MOVE-IN COSTS

1 to 2 month's rent (refundable) security deposit with approved credit
Fee in lieu of deposit ranging from \$350–500 (non-refundable) based on credit
Prorated rent

PET DEPOSITS/FEES

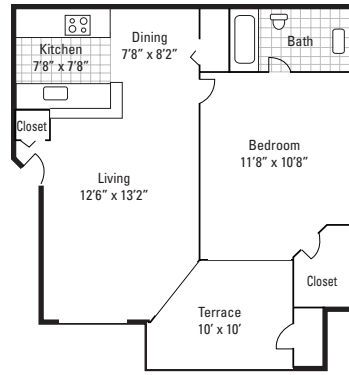
\$350–500 pet fee, up to 2 pets
\$25–35/month pet rent per pet
75 lb. weight limit
Breed restrictions apply

ADDITIONAL INFORMATION

Online rent payments accepted via credit, debit, and e-check

HOURS

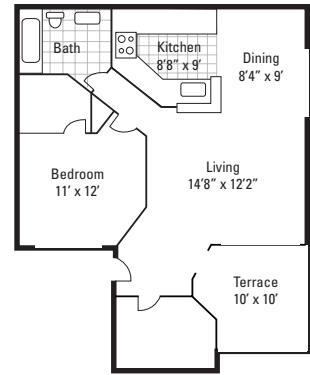
M–F	9 to 6	Sat	10 to 4
		Sun	Closed



1 Bedroom

1 Bedroom, 1 Bath
710 sq. ft.

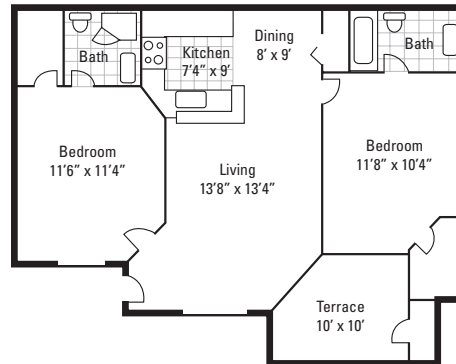
Starting at \$1164*



1 Bedroom

1 Bedroom, 1 Bath
800 sq. ft.

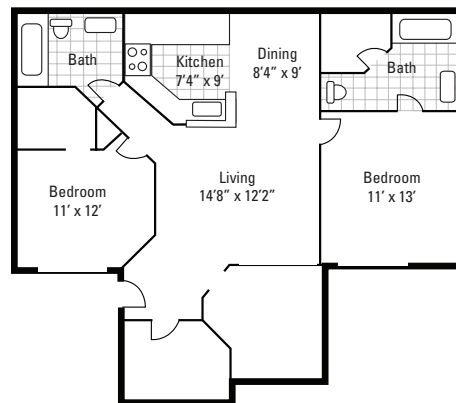
Starting at \$1433*



2 Bedroom

2 Bedroom, 2 Bath
950 sq. ft.

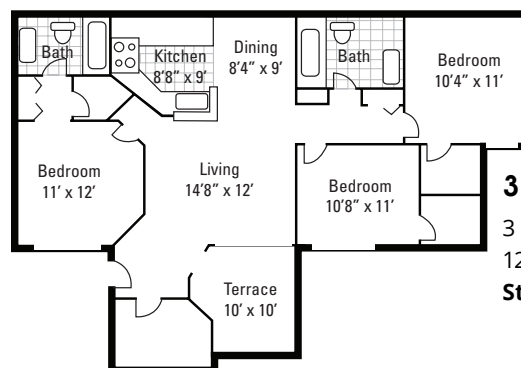
Starting at \$1570*



2 Bedroom

2 Bedroom, 2 Bath
1050 sq. ft.

Starting at \$1735*



3 Bedroom

3 Bedroom, 2 Bath
1200 sq. ft.

Starting at \$1957*

**Prices change daily based on current market availability.
Please call complex for current pricing. Refer to Apartment Information section at the front of the guide for more info.*

The Crossing at Winter Park

751 Minnesota Ave., Winter Park, FL 32789
407.490.2595

WEBSITE AND EMAIL

www.thecrossingatwinterpark.com
thecrossingatwinterpark@gmail.com

UTILITIES AND FEATURES

- High-speed fiber Internet, pest control, lawn care, and on-site parking included in rent
- Renters insurance required
- Private bathroom in every bedroom
- Washer/dryer in every apartment
- Microwave in every apartment
- Outdoor security cameras

AMENITIES

- Pool and sun patio
- Bike rack
- Central air
- Walking distance to Park Ave. and Orange Ave.
- Keyless entry and coded bedroom locks

LOCATION

Located off of Minnesota Ave., 5 miles west of campus

APPLICATION FEES

\$65 per applicant/guarantor

MOVE-IN COSTS

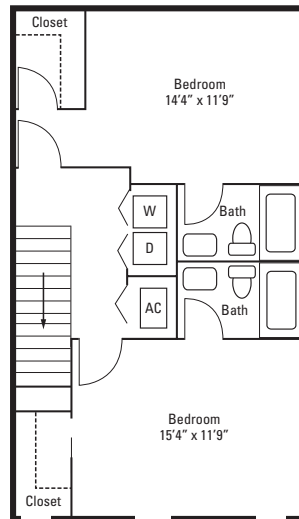
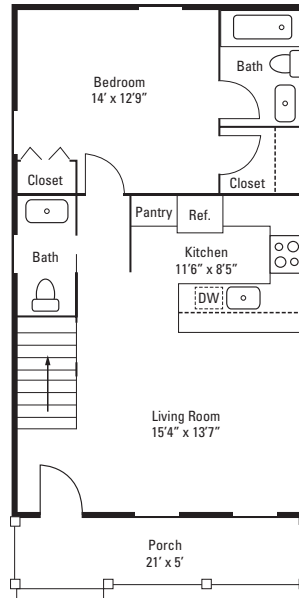
1 month's rent (refundable) security deposit

ADDITIONAL INFORMATION

No pets allowed

HOURS

M-Sat 9 to 6 Sun 12 to 5



Two-Story Townhomes

3 Bedroom, 3.5 Bath
1600 sq. ft.
\$1550 per room

Elon Winter Park

712 Nicolet Ave., Winter Park, FL 32789
407.603.3343

WEBSITE AND EMAIL

https://www.aspensquare.com/apartments/florida/winter-park/elon-winter-park?utm_knock=g

UTILITIES AND FEATURES

- Water/sewer/trash not included in rent
- Pest control included in rent
- Washer/dryer included in all units
- Reserved parking available

AMENITIES

- Resort-style pool with Wi-Fi
- Dog park
- 24-hour fitness center
- Amazon hub
- Dog wash station
- Fire pit and grill area

LOCATION

Located off of N. Mills Ave., 5.4 miles west of campus

APPLICATION FEES

\$100 per applicant/guarantor—half off for Full Sail students

MOVE-IN COSTS

\$200 administrative fee—half off for Full Sail students

\$500 to 1 month's rent (refundable) security deposit based on credit

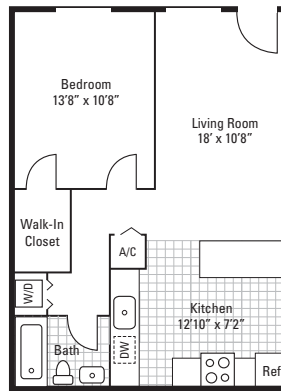
PET DEPOSITS/FEES

\$400 (non-refundable) pet fee for 1 pet; \$600 for 2 pets

\$20/month pet rent per pet, up to 2 pets
Breed restrictions apply

HOURS

M-F	8:30 to 5	Sat	Closed
		Sun	Closed



One Bedroom

1 Bedroom, 1 Bath
740 sq. ft.

Starting at \$1692*

**Prices change daily based on current market availability. Please call complex for current pricing. Refer to Apartment Information section at the front of the guide for more info.*

Enders Place at Baldwin Park

4220 New Broad St., Suite 104, Orlando, FL 32814
407.863.6307

WEBSITE AND EMAIL

www.endersplaceatbaldwinparkorlando.com
endersplace@zrsmanagement.com

UTILITIES AND FEATURES

- Water not included
- Washer and dryer included in every apartment

AMENITIES

- 3 Olympic and resort-style swimming pools
- 2 state-of-the-art 24-hour fitness centers
- Playgrounds and parks
- Barbecue/picnic areas
- Cady Way Trail, Lake Baldwin Trail, Winter Park Biking Trails
- 1- and 2-car garages available

LOCATION

Located off of Semoran Blvd., 3 miles southwest of campus in Baldwin Park

APPLICATION FEES

\$100 per applicant/guarantor
\$250 (non-refundable) administration fee

MOVE-IN COSTS

\$200 (refundable) or 1 month's rent security deposit based on credit

PET DEPOSITS/FEES

\$500–850 pet fee, up to 2 pets
\$25/month pet rent
Breed restrictions apply

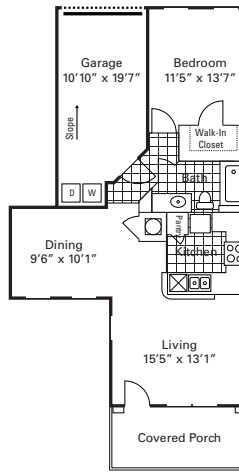
ADDITIONAL INFORMATION

Apartments, condos, and townhouses available

HOURS

M–F	9 to 6	Sat	10 to 5
		Sun	Closed

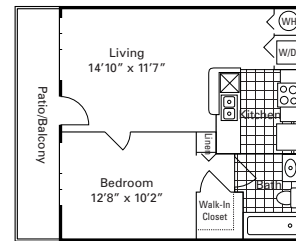
**Prices change daily based on current market availability. Please call complex for current pricing. Refer to Apartment Information section at the front of the guide for more info.*



Laurel

1 Bedroom, 1 Bath
958 sq. ft.

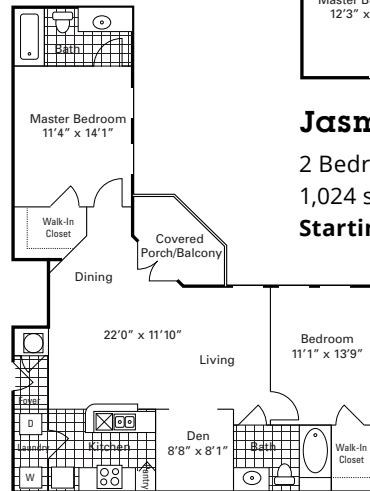
Starting at \$2173*



Lily

1 Bedroom, 1 Bath
522 sq. ft.

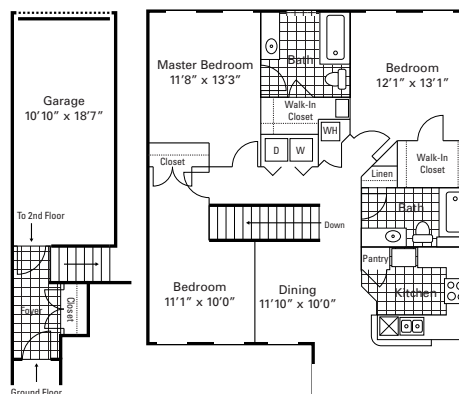
Starting at \$1830*



Jasmine

2 Bedroom, 2 Bath
1,024 sq. ft.

Starting at \$2173*



Sago

2 Bedroom, 2 Bath
1,147 sq. ft.

Starting at \$2584*

Magnolia

3 Bedroom, 2 Bath
1,509 sq. ft.

Starting at \$2817*

Goldelm on Baldwin Park

5590 Baldwin Park St., Orlando, FL 32807
407.678.2100 407.678.2245 fax

WEBSITE AND EMAIL

www.goldelm.com
baldwinpark@goldelm.com

UTILITIES AND FEATURES

- Flat rate for water/trash/pest control/amenity fees
- Washer/dryer in select units
- Renters insurance required

AMENITIES

- Stainless steel appliances, including microwave
- Ultramodern fixtures and lighting
- Wood-inspired flooring
- 3 swimming pools with resort-style sun decks
- Pet-friendly community with "bark park"
- 2 on-site laundry facilities
- Private entrance to Cady Way Trail
- 24-hour state-of-the-art fitness center
- Granite countertops
- Townhome-style floor plans available

LOCATION

Located off of Semoran Blvd., 1.3 miles south of campus

APPLICATION FEES

\$75 per applicant/guarantor

MOVE-IN COSTS

\$200 administrative fee
\$300 to 2 months' rent (refundable) security deposit based on credit

PET DEPOSITS/FEES

\$350–500 pet fee, up to 2 pets
\$30/month pet rent per pet
Breed restrictions apply
Pet insurance required
No weight limit

ADDITIONAL INFORMATION

Online cash, credit, and debit rent payments accepted via Walmart
Virtual tour available on the website

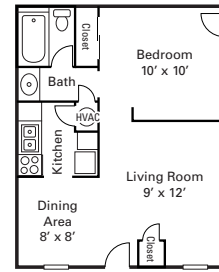
HOURS

M–F	9 to 6	Sat	10 to 5
		Sun	Closed

**Prices change daily based on current market availability. Please call complex for current pricing. Refer to Apartment Information section at the front of the guide for more info.*

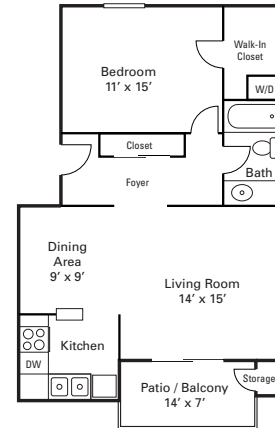
Executive Studio

1 Bedroom, 1 Bath
518–602 sq. ft.
\$1110–1140*
\$67 flat rate for water/trash/pest control/amenities/facility fee



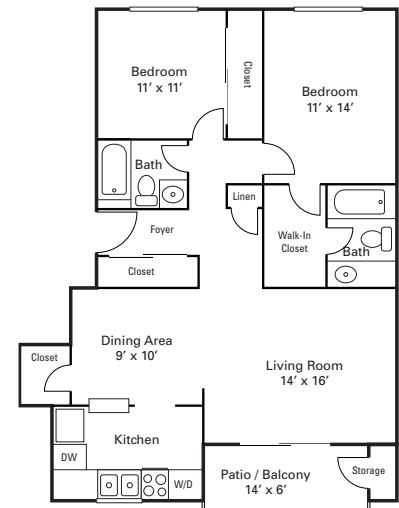
Deluxe One Bedroom

1 Bedroom, 1 Bath
805 sq. ft.
\$1325–1485*
\$77 flat rate for water/trash/pest control/amenities/facility fee



Two Bedroom

2 Bedroom, 2 Bath
1023 sq. ft.
\$1525–1710*
\$87 flat rate for water/trash/pest control/amenities/facility fee

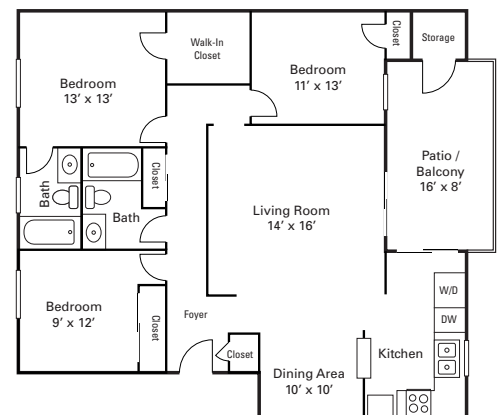


Townhouse (Not Pictured)

2 Bedroom, 1½ Bath
1034 sq. ft.
\$1630–1755*
\$87 flat rate for water/trash/pest control/amenities/facility fee

Three Bedroom

3 Bedroom, 2 Bath
1263 sq. ft.
\$1910–1950*
\$97 flat rate for water/trash/pest control/amenities/facility fee



Harper Grand

5916 Mausser Dr., Orlando, FL 32822
407.275.3790 407.384.8505 fax

WEBSITE AND EMAIL

www.harpergrand.com
harper_grand@aspensquare.com
Instagram: @Harper_Grand

UTILITIES AND FEATURES

- Flat rate for water/trash in select apartments
- Sewer billed separately
- Pest control included in rent
- Full-size washer and dryer included in every apartment

AMENITIES

- Stainless steel appliances
- Resort-style swimming pool
- 24-hour fitness center
- Illuminated tennis court
- Barbecue and picnic area
- Bark park
- Nest thermostat
- Tile backsplash
- Business center
- Amazon hub lockers with 24-hour access
- Pickleball court

LOCATION

Located off of Curry Ford Rd., 6 miles south of campus

APPLICATION FEES

\$100 application fee; \$100 for guarantor
Half off application fee for Full Sail students

MOVE-IN COSTS

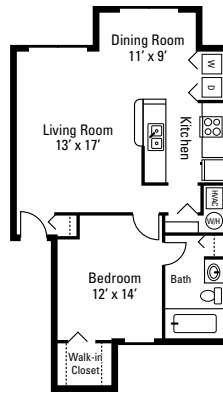
\$100 holding deposit
\$200 administrative fee—half off for Full Sail students
\$400 (refundable) security deposit for 1- to 2-bedroom apartments
\$600 (refundable) security deposit for 3- to 4-bedroom apartments
Based on credit

PET DEPOSIT/FEES

\$350–600 pet fee, up to 2 pets
\$20/month pet rent per pet
Breed restrictions apply

ADDITIONAL INFORMATION

Online payments accepted via credit, debit, and checking account
Additional floor plans available
Virtual tour available on the website



The Mason

1 Bedroom, 1 Bath
707 sq. ft.

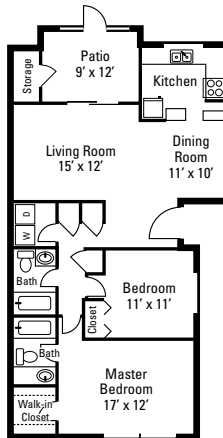
Starting at \$1550*
\$28 flat rate for water/trash



The Allister

2 Bedroom, 2 Bath
1008 sq. ft.

Starting at \$1649*
\$37 flat rate for water/trash



The Braylen

2 Bedroom, 2 Bath
1150 sq. ft.

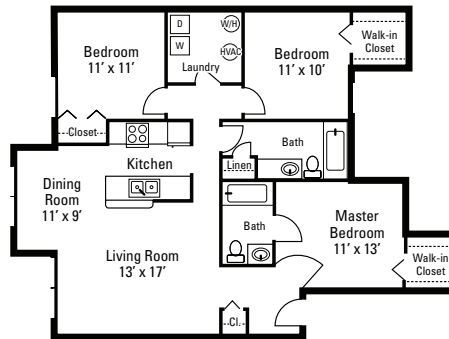
Starting at \$1749*
\$22 flat rate for trash



The Weston

3 Bedroom, 2 Bath
1375 sq. ft.

Starting at \$2266*
\$25 flat rate for trash



The Aubrey

3 Bedroom, 2 Bath
1175 sq. ft.

Starting at \$2000*
\$45 flat rate for water/trash

HOURS

M–F	8 to 6	Sat	10 to 4
		Sun	Closed

**Prices change daily based on current market availability.
Please call complex for current pricing. Refer to Apartment
Information section at the front of the guide for more info.*

Indigo Winter Park

220 S. Semoran Blvd., Winter Park, FL 32792
407.677.5715 407.677.0451 fax

WEBSITE AND EMAIL

www.mckinley.com/indigo
indigo@mckinley.com

UTILITIES AND FEATURES

- All utilities (electric, water, sewer, gas, and trash) included with no usage caps
- Washer/dryer included in every apartment

AMENITIES

- Recording studio
- Bicycle parking throughout
- 3 sparkling pools
- 2 tennis courts
- Sand volleyball court
- 24-hour emergency maintenance

LOCATION

Located at the intersection of University Blvd. and Semoran Blvd., less than 0.25 miles from campus

APPLICATION FEES

\$50 per applicant or guarantor

MOVE-IN COSTS

\$200 reservation fee
\$200 (non-refundable) administration fee due at move-in
\$300–500 (refundable) security deposit

PET DEPOSITS/FEES

\$300–500 (non-refundable) pet fee, up to 2 pets
\$30/month pet rent, up to 2 pets
Breed restrictions apply

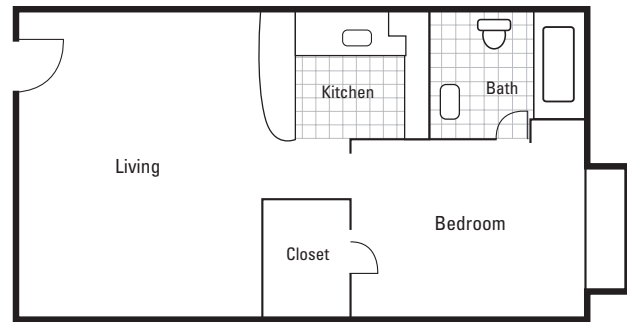
ADDITIONAL INFORMATION

Limited specials available
Apply online at www.mckinley.com/indigo
Furnished apartments available
Resident online portal service—rent payments accepted online

HOURS

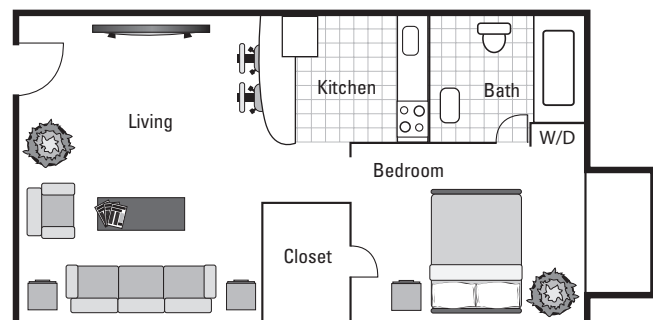
M–F	9 to 6	Sat	By appt.
		Sun	By appt.**

**Open on BTS Sundays from 1 to 5



1 Bedroom—Unfurnished

501 sq. ft.
Starting at \$1399*



1 Bedroom—Furnished

501 sq. ft.
Starting at \$1499*

**Prices change daily based on current market availability. Please call complex for current pricing. Refer to Apartment Information section at the front of the guide for more info.*

The Julian

480 N. Terry Ave. Orlando, FL 32801
407.431.0109

WEBSITE AND EMAIL

www.thejulianorlando.com
thejulian@altmancos.com

UTILITIES AND FEATURES

- Trash/amenity/pest control \$55/month
- Internet \$85/month
- First parking spot \$25 per leaseholder; additional spots \$75
- All vehicles must be in the leaseholder's name
- Renters insurance required
- Renters insurance available \$15/month

AMENITIES

- Rooftop pool and clubhouse
- Open-air fitness center
- The Monroe restaurant
- Work-from-home and amenity space
- Courtyard
- Secure-access controlled parking
- Game room; billiards table
- Hammock park
- Library
- Efficient appliances
- Washer/dryer
- Furnished select units

LOCATION

Located off of West Colonial Dr., 8.1 miles from campus

APPLICATION FEES

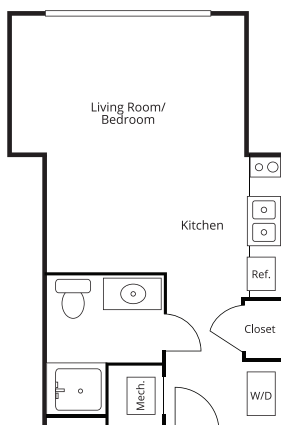
\$100 total for both application fee and administrative fee

MOVE-IN COSTS

Up to \$500 (refundable) security deposit
2 months' free rent
1 month's rent security deposit for residents with no social security number
Additional deposit may be required based on credit

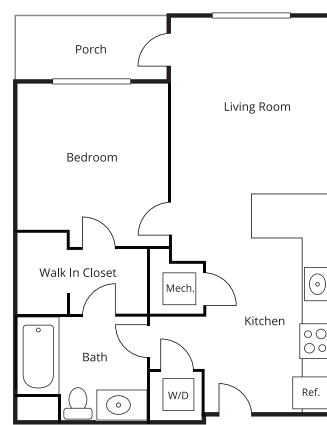
PET DEPOSITS/FEES

\$400 (non-refundable) pet fee for 1 pet; \$150 (non-refundable) pet fee for second pet
Maximum of 2 pets; breed restrictions apply
\$25/month pet rent per pet
75 lb. combined weight limit
All pets must be registered and approved at thejulian.petscreening.com



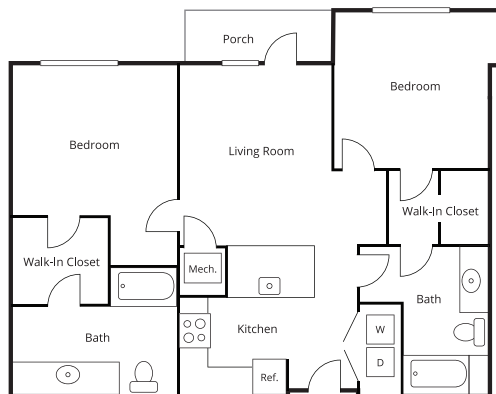
Da Vinci

Studio
414 sq. ft.
Starting at \$1299



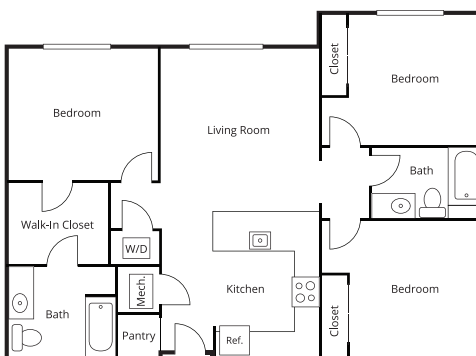
Matisse

1 Bedroom, 1 Bath
726 sq. ft.
Starting at \$1695



Picasso

2 Bedroom, 2 Bath
1071 sq. ft.
Starting at \$2229



Van Gogh

3 Bedroom, 2 Bath
1291 sq. ft.
Starting at \$2605

HOURS

M-F	9 to 6	Sat	10 to 5
		Sun	1 to 5

Lakeside Villas

7950 Shoals Dr., Orlando, FL 32817
407.678.2223 407.678.7722 fax

WEBSITE AND EMAIL

www.lakesidevillasapt.com
lakesideleasing@apmsus.com

UTILITIES AND FEATURES

- Pest control \$4/month
- Water, sewer, trash, common-space electric, and common-space utilities billed by Yardi based on occupancy and square footage
- Renters insurance required: \$100,000 personal liability requirement

AMENITIES

- Stainless steel appliances in select units
- Granite or quartz countertops
- White shaker-style cabinets
- Two sparkling resort-style pools
- Poolside firepit
- 24-hour fitness center
- Fishing dock and boat launch
- Basketball court and tennis courts
- On-site laundry facilities
- Screened patios or balconies
- Barbeque area
- Walk-in closets in select units
- Ceiling fans in select units
- Washer and dryers in select units

LOCATION

Located near the intersection of Aloma Ave. and Hall Rd., 2 miles northeast of campus

APPLICATION FEES

\$75 per adult applicant (non-refundable)—half off for Full Sail students

SECURITY DEPOSITS

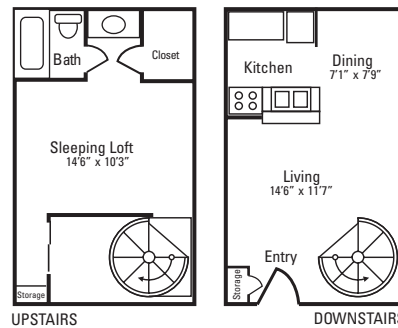
\$250 administrative fee (non-refundable)—half off for Full Sail students
\$200 to 1 month's rent (refundable) starting deposit for 1-bedroom apartments
\$300 to 1 month's rent (refundable) starting deposit for 2-bedroom apartments

PET DEPOSITS/FEES

\$300 (non-refundable) pet fee for 1 pet; \$500 for 2 pets, up to 2 pets
\$20/month pet rent per pet
Breed restrictions apply

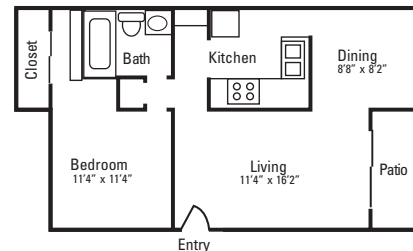
HOURS

M-F	9 to 6	Sat	10 to 5
		Sun	Closed



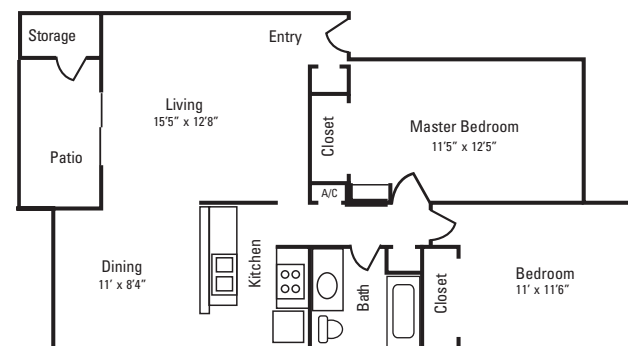
The Catalina

1 Bedroom-Loft
700 sq. ft.
Starting at \$1450*



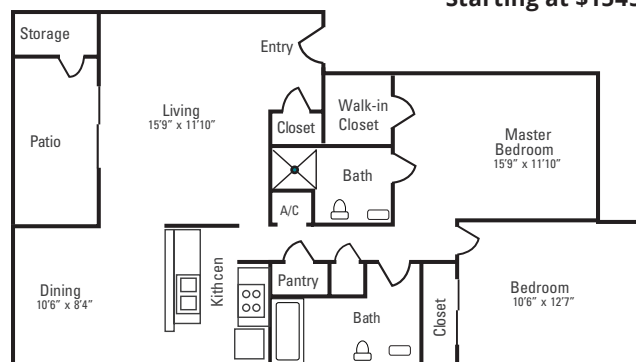
The Riviera

1 Bedroom
700 sq. ft.
Starting at \$1350*



The Cayman

2 Bedroom, 1 Bath
925 sq. ft.
Starting at \$1545*



The Caribbean

2 Bedroom, 2 Bath
1040 sq. ft.
Starting at \$1725*

**Prices change daily based on current market availability.
Please call complex for current pricing. Refer to Apartment
Information section at the front of the guide for more info.*

LIV at Winter Park

4755 N. Goldenrod Rd., Winter Park, FL 32792
407.790.7508

WEBSITE

www.livatwinterpark.com
leasing@livatwinterpark.com

UTILITIES AND FEATURES

- Water/sewer not included in rent
- Washer/dryer included in every apartment
- Valet trash \$30/month
- Trash removal \$15/month
- Amazon hub lockers \$10/month
- Pest control \$7/month
- Renters insurance required

AMENITIES

- White sand beach on Lake Nan
- 2 swimming pools
- Business center
- Fitness center
- Dog park
- Tennis court

LOCATION

Located off of Goldenrod Rd., 1.65 miles northeast of campus

APPLICATION FEES

\$75 (non-refundable) application fee—half off for Full Sail students

\$250 (non-refundable) administration fee—half off for Full Sail students

MOVE-IN COSTS

\$200–400 (refundable) security deposit based on apartment

Up to \$750 cap on security deposit based on credit

PET DEPOSITS/FEES

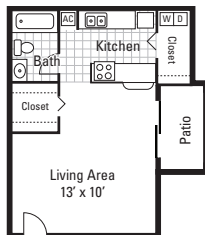
\$300 (non-refundable) pet fee per pet

\$25/month pet rent per pet

HOURS

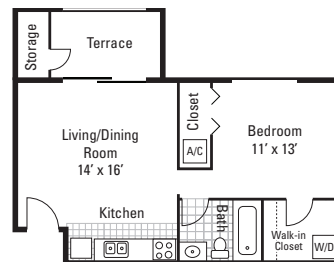
M–F	10 to 6	Sat	10 to 5
		Sun	Closed

**Prices change daily based on current market availability. Please call complex for current pricing. Refer to Apartment Information section at the front of the guide for more info.*



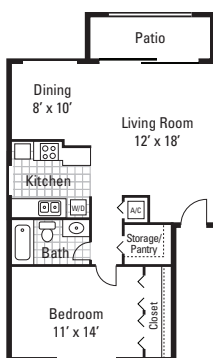
E1

Studio
500 sq. ft.
Starting at \$1282*



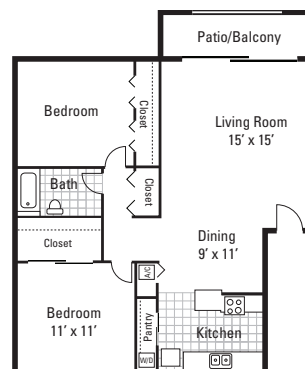
A1

1 Bedroom, 1 Bath
533 sq. ft.
Starting at \$1438*



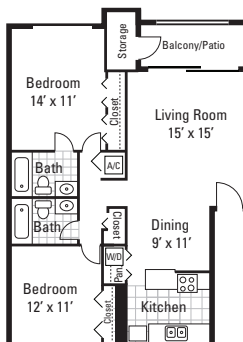
A2

1 Bedroom, 1 Bath
721 sq. ft.
Starting at \$1532*



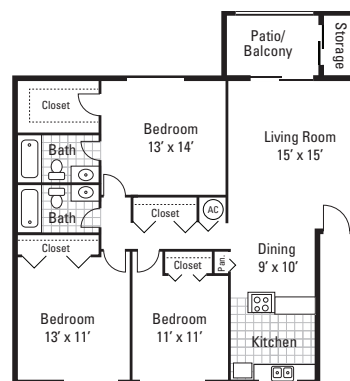
B1

2 Bedroom, 1 Bath
912 sq. ft.
Starting at \$1473*



B2

2 Bedroom, 2 Bath
967 sq. ft.
Starting at \$1636*



C1

3 Bedroom, 2 Bath
1189 sq. ft.
Starting at \$1970*

Oak Reserve

541 Oak Reserve Ln., Winter Park, FL 32792
407.679.2200 407.679.2207 fax

WEBSITE AND EMAIL

www.oakreserveapts.com
dlopez@apmsvs.com

UTILITIES AND FEATURES

- Water/sewer not included in rent
- Pest control \$1.50/month
- Trash \$15/month
- Washer/dryer included in all apartments
- Renters insurance required

AMENITIES

- State-of-the-art 24-hour exercise and fitness facility
- 2 sparkling swimming pools
- Business center with Internet access open during office hours
- Microwave included

LOCATION

Located at intersection of Forsyth Rd. and Aloma Ave., less than 1 mile north of campus

APPLICATION FEES

\$95 per unit

MOVE-IN COSTS

\$250 administration fee
\$250-350 security deposit based on apartment

PET DEPOSITS/FEES

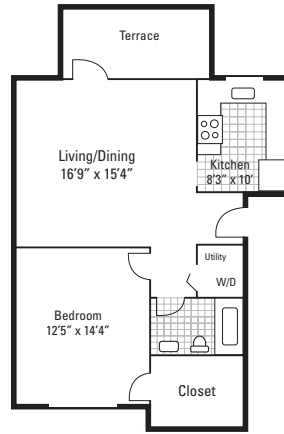
\$350-500 pet fee, up to 2 pets
\$30/month pet rent
100 lb. weight limit
No exotic animals and breed restrictions apply

ADDITIONAL INFORMATION

Online payments accepted via resident portal
Credit cards accepted with a convenience fee

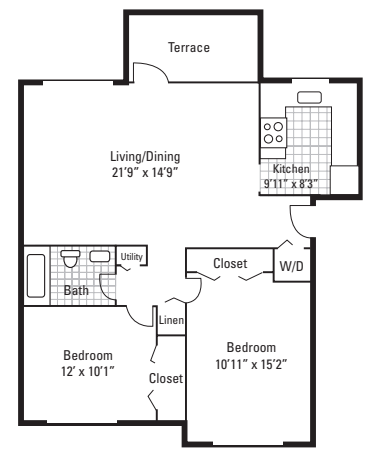
HOURS

M-F	8:30 to 5:30	Sat	10 to 5
		Sun	Closed



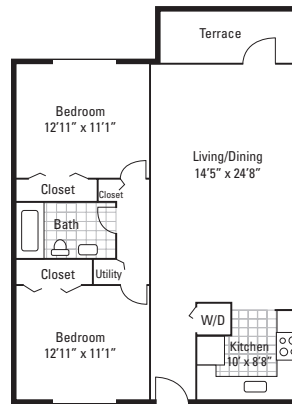
The Charleston

1 Bedroom, 1 Bath
690 sq. ft.
\$1475-1525



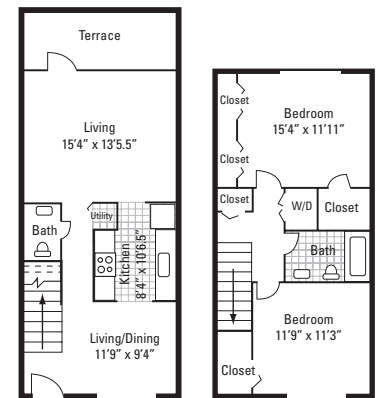
The Georgetown

2 Bedroom, 1 Bath
863 sq. ft.
\$1625-1675



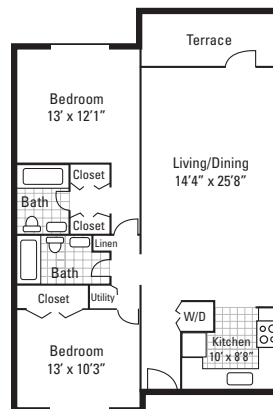
The Alexandria

2 Bedroom, 1 Bath
913 sq. ft.
\$1775



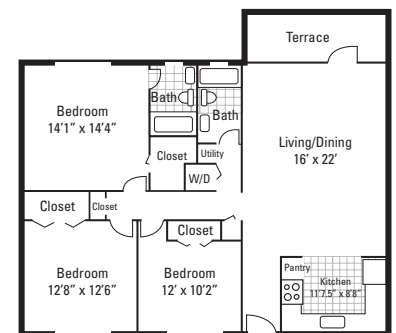
The Henderson

2 Bedroom, 1½ Bath
1002 sq. ft.
\$1825



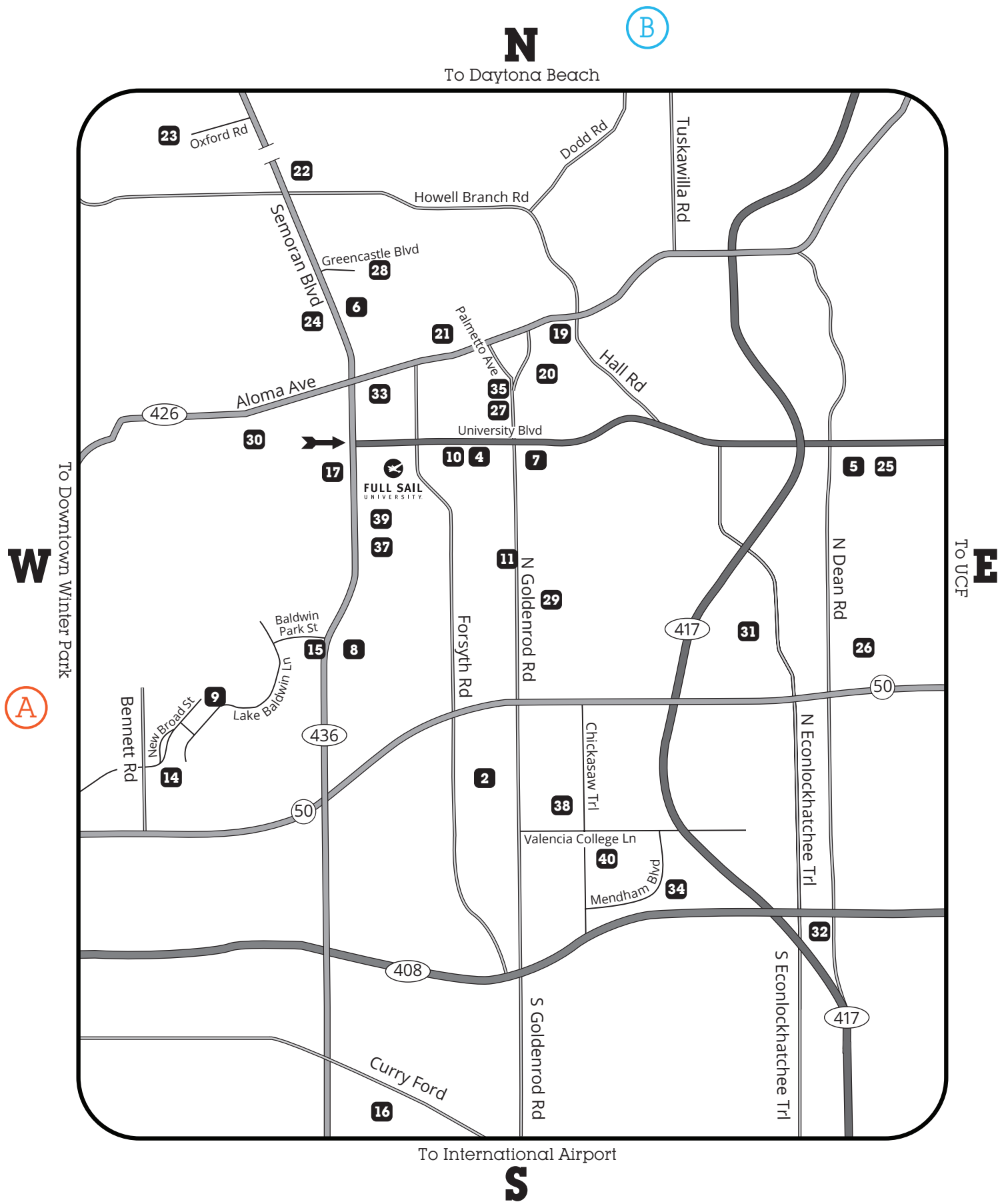
The Savannah

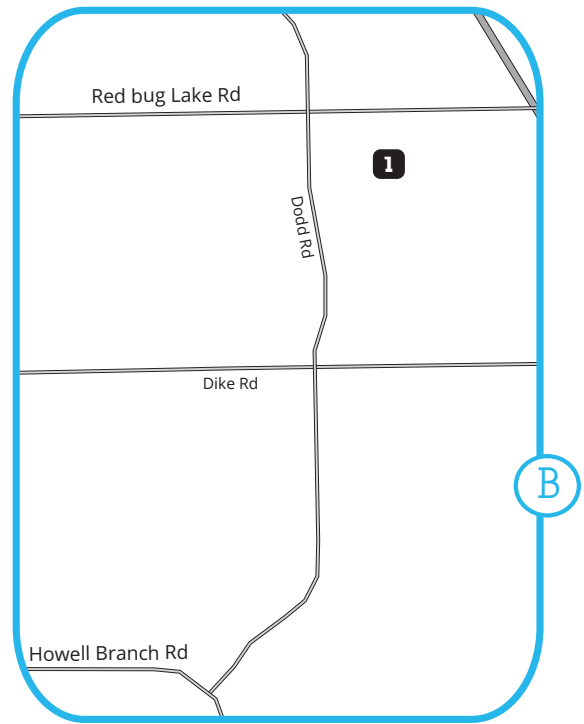
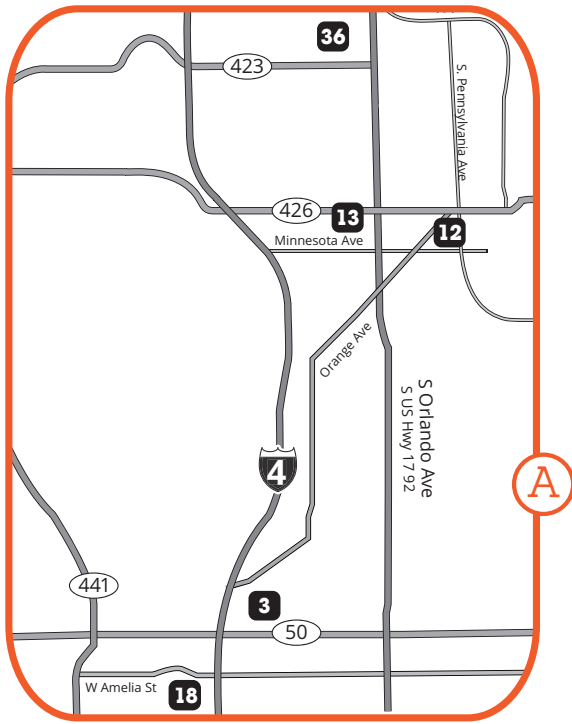
2 Bedroom, 2 Bath
1022 sq. ft.
\$1875



The Reserve

3 Bedroom, 2 Bath
1268 sq. ft.
\$2075





Car icon indicates the apartment is within driving distance.



Bike icon indicates the apartment is within biking distance.



Walker icon indicates the apartment is within walking distance.

Complex

1 1020 at Winter Springs

2 Adele Place

3 Alexan Mills 50

4 Alvista Winter Park

5 ARIUM Mission Bay

6 ARIUM Winter Park

7 Atlas at Winter Park

8 Avenues of Baldwin Park

9 Baldwin Harbor

10 Central Place at Winter Park

11 Cranes Landing

12 The Crossing at Winter Park

13 Elon Winter Park

14 Enders Place

15 Goldelm on Baldwin Park

16 Harper Grand

17 Indigo Winter Park

18 The Julian

19 Lakeside Villas

20 LIV at Winter Park

21 Oak Reserve

Map

B

Main

A

Main

Main

Main

Main

Main

Main

Main

Main

A

A

Main

Main

Main

Main

A

Main

Main

Main

Complex

22 Onyx Winter Park

23 The Park at Rialto

24 Poste Winter Park

25 The Quad

26 River Park

27 Solis at Winter Park

28 Stonecastle

29 Summerlin at Winter Park

30 The Taylor

31 University Park Apartments

32 Vale East

33 Venue at Winter Park

34 Villa Valencia

35 Vintage Winter Park

36 Westmount at Winter Park

37 Whisper Lake

38 Windrift Apartments

39 Winter Park Woods

40 Woodlands



Full Sail University

Map

Main

Main

Main

Main

Main

Main

Main

Main

Main

Main

Main

Main

Main

Main

A

Main

Main

Main

Main

Main

Main

Onyx Winter Park

100 Reflections Cir., Casselberry, FL 32707
321.334.5112

WEBSITE

www.liveatonyx.com

UTILITIES AND FEATURES

- Valet trash/pest control/package locker/bulk trash \$40/month
- Required Internet/cable package \$99/month
- Washer/dryer included in select apartments
- Covered and reserved parking available
- Renters insurance required

AMENITIES

- Dog park
- Pool
- Fitness center
- Pet spa
- BBQ/picnic area
- Covered parking
- Playground
- On-site app- and card-operated laundry facility
- Valet trash

LOCATION

Located off of Semoran Blvd., 2.9 miles north of campus

APPLICATION FEES

\$99 total application and administration fee for 1 applicant

\$139 total application and administration fee for 2 applicants

MOVE-IN COSTS

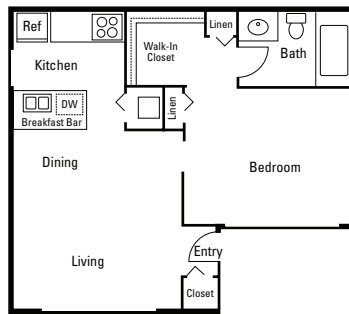
\$100 off waiver fees listed below after approval for Full Sail students
\$399-699 (non-refundable) waiver fee for studio and 1-bedroom apartments
\$599-799 (non-refundable) waiver fee for 2-bedroom apartments

PET DEPOSITS/FEES

\$350 pet fee per pet, up to 2 pets
\$30/month pet rent per pet
No breed restrictions
No weight limit

HOURS

M-F	9 to 6	Sat	10 to 5
		Sun	Closed

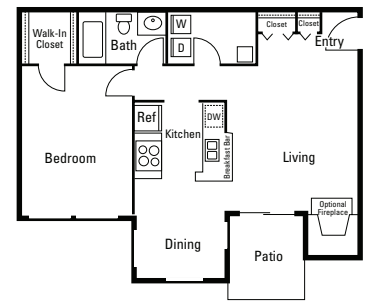


A1

Studio

460 sq. ft.

Starting at \$1290*

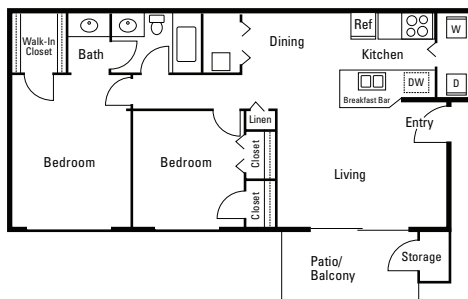


A2

1 Bedroom, 1 Bath

684 sq. ft.

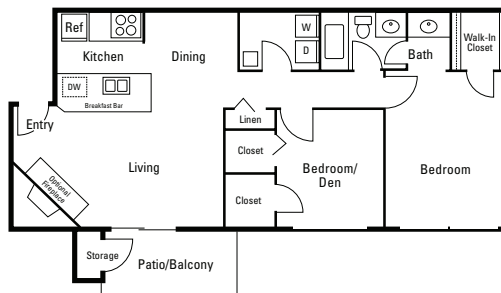
Starting at \$1465*



B1

2 Bedroom, 1 Bath
818 sq. ft.

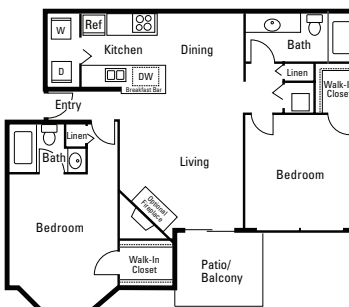
Starting at \$1699*



B2

2 Bedroom, 1 Bath
887 sq. ft.

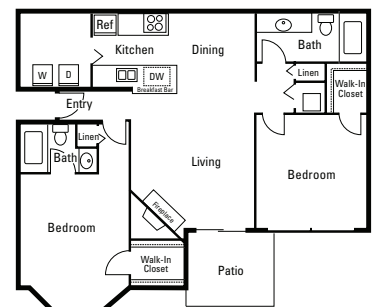
Starting at \$1780*



B3

2 Bedroom, 2 Bath
950 sq. ft.

Starting at \$1810*



B4

2 Bedroom, 2 Bath
998 sq. ft.

Starting at \$1730*

**Prices change daily based on current market availability.
Please call complex for current pricing. Refer to Apartment
Information section at the front of the guide for more info.*

The Park at Rialto

2174 Sharp Ct., Fern Park, FL 32730
689.356.0349

WEBSITE

<https://www.theparkatrialto.com>
Rialto@BlueRocPremier.com

UTILITIES AND FEATURES

- Water/trash/sewer/pest control \$47/month for 1-bedroom; \$57/month for 2-bedroom
- Newly renovated units
- Washer/dryer in select units

AMENITIES

- 24-hour fitness center
- Clubhouse
- Business center with coffee and tea bar
- Dog park
- On-site laundry facility
- Picnic area with BBQ grills
- Playground
- Swimming pools

LOCATION

Located off of Semoran Blvd., 6.3 miles north of campus

APPLICATION FEES

\$99 total application and administration fee for Full Sail students

MOVE-IN COSTS

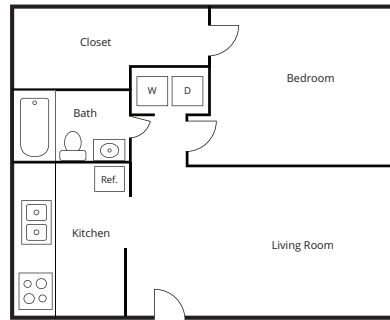
From \$250 to 1 month's rent (refundable) security deposit, based on background screening
\$70 water setup fee
Prorated rent/utilities from day of move-in

PET DEPOSITS/FEES

\$400–500 pet fee per pet, up to 2 pets*
\$25–40/month pet rent*
80 lb. weight limit—breed restrictions apply
*Pet rent and fees are determined on a per-individual basis by a third-party screening service

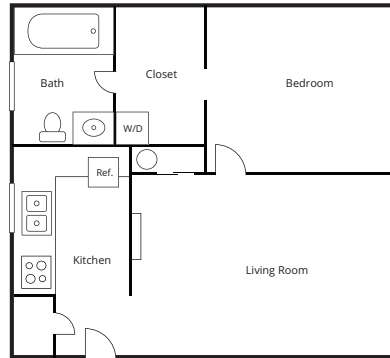
HOURS

M–F	9 to 5:30	Sat	10 to 5
		Sun	Closed



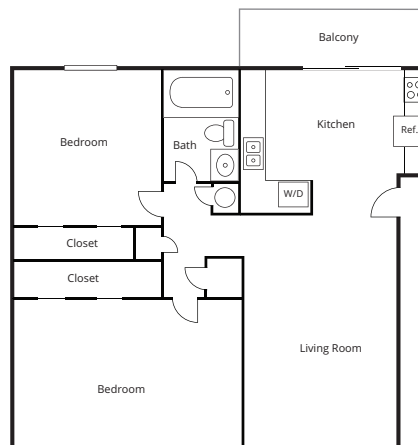
A1

1 Bedroom, 1 Bath
500 sq. ft.
Starting at \$1299



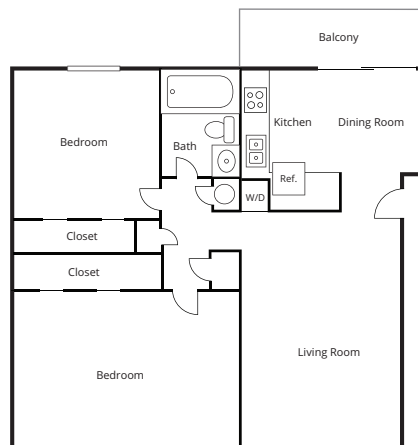
A2

1 Bedroom, 1 Bath
528 sq. ft.
Starting at \$1329



B1

2 Bedroom, 1 Bath
800 sq. ft.
Starting at \$1499



B2

2 Bedroom, 1 Bath
800 sq. ft.
Starting at \$1499

Poste Winter Park

800 Semoran Park Dr., Winter Park, FL 32792
407.618.7215

EMAIL

poste@aspensquare.com

UTILITIES AND FEATURES

- Water/sewer/trash not included in rent
- Washer/dryer in every floor plan
- Pest control included in rent

AMENITIES

- Stainless steel appliances
- Sparkling swimming pool
- Private patios/balconies
- Wood-style flooring
- Walk-in closets
- 24-hour maintenance
- Amazon package locker

LOCATION

Located off of Semoran Blvd., 1.4 miles north of campus

APPLICATION FEES

\$100 per applicant/guarantor—waived for Full Sail students and half off for guarantors

MOVE-IN COSTS

\$100 reservation fee
\$200 administrative fee—waived for Full Sail students
Security deposit (refundable) starting at \$300

PET DEPOSITS/FEES

\$350–600 (non-refundable) pet fee
Maximum 2 pets
\$20/month pet rent per pet
Breed restrictions apply

HOURS

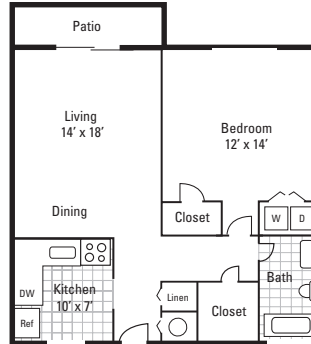
M–F	8:30 to 5	Sat	Closed
		Sun	Closed

**Prices change daily based on current market availability. Please call complex for current pricing. Refer to Apartment Information section at the front of the guide for more info.*



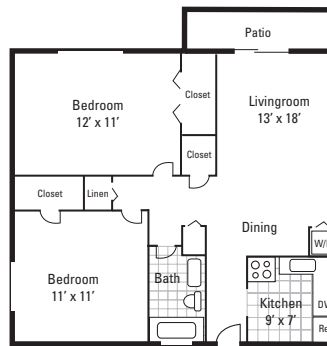
Ivy

1 Bedroom, 1 Bath
710 sq. ft.
Starting at \$1650*



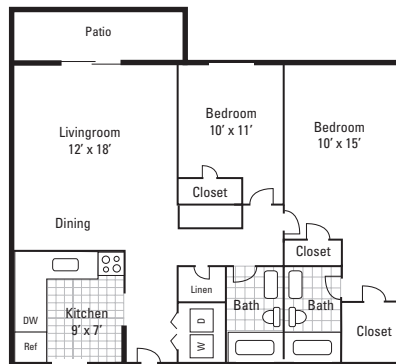
Palm

1 Bedroom, 1 Bath
810 sq. ft.
Starting at \$1600*



Arbor

2 Bedroom, 1 Bath
950 sq. ft.
Starting at \$1720*



Cypress

2 Bedroom, 2 Bath
1050 sq. ft.
Starting at \$1800*

The Quad

10200 University Blvd., Orlando, FL 32817
407.395.4455 407.998.3787 fax

WEBSITE AND EMAIL

www.thequadapts.com
leasing@thequadapts.com

UTILITIES AND FEATURES

- Electric/water/trash/sewer/Wi-Fi included in rent
- Full-size washer/dryer in every apartment
- Individual leases
- Renters insurance required

AMENITIES

- Fully furnished
- Standard, premium, and platinum unit options available
- Gated entry
- Resort pool and cabanas
- Basketball court
- Sand volleyball court
- Copier service
- 24-hour fitness center
- Business lab
- Hammock garden

LOCATION

Located on the corner of University Blvd. and Dean Rd., 4 miles east of campus

APPLICATION FEES

\$50 per person
\$250 (non-refundable) administrative fee

MOVE-IN COSTS

\$250 (refundable) security deposit, if applicable

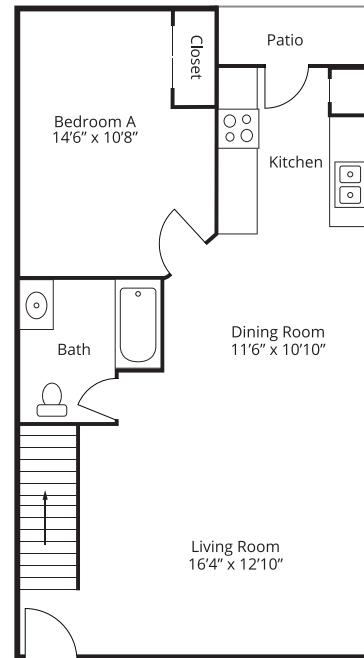
PET DEPOSITS/FEES

\$550 pet fee (waived for service animals), up to 2 pets
\$30/month cat rent, \$50/month dog rent
No breed restrictions

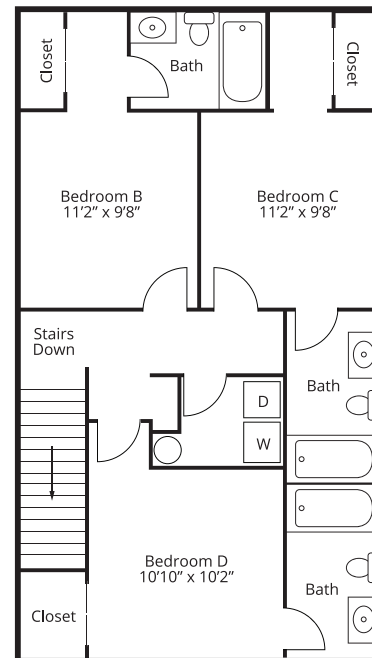
HOURS

M-F	9 to 6	Sat	10 to 4
		Sun	Closed

First Floor



Second Floor



Standard

4 Bedroom, 4 Bath

1500 sq. ft.

Starting at \$899 per person

River Park

2211 River Park Cir., Orlando, FL 32817
407.381.2222 407.381.8142 fax

WEBSITE AND EMAIL

www.riverpark.info
leasing@riverpark.info

UTILITIES AND FEATURES

- Flat rate for water/sewer included in rent
- Trash/pest control included in rent
- Washer/dryer rental \$55/month
- Full-size washer/dryer connections in every apartment
- Renters insurance required
- Spectrum TV Choice and Internet \$30/month (required)

AMENITIES

- 2 on-site card-operated laundry facilities open 7 a.m. to 11 p.m.
- Fully equipped fitness center open 7 a.m. to 11 p.m.
- 2 swimming pools and Jacuzzis
- Community gazebo with gas grill
- Canoes available for resident enjoyment
- Air-conditioned racquetball court
- Lighted tennis and pickleball courts
- Dog wash

LOCATION

Located off of Dean Rd., 5.5 miles southeast of campus

APPLICATION FEES

\$50 per applicant/guarantor

MOVE-IN COSTS

\$150 (non-refundable) administrative fee
\$150 (refundable) for 1-bedroom units
\$200 (refundable) for 2-bedroom units
\$300 (refundable) for 3-bedroom units

PET DEPOSITS/FEES

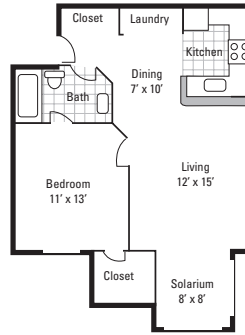
\$150 (\$75 refundable) for a cat
\$250–500 for dogs (half of which is refundable)
\$10/month pet rent
Breed restrictions apply
Maximum 2 pets per apartment

ADDITIONAL INFORMATION

Online payments accepted via bank account, cashier's check, or credit card
Full Sail special—\$100 off the first month's rent
Virtual tour available on the website

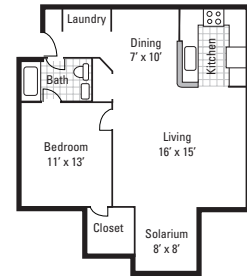
HOURS

M–F	9 to 6	Sat	10 to 5
		Sun	12 to 5



Adair

1 Bedroom, 1 Bath
602 sq. ft.
Starting at \$1360



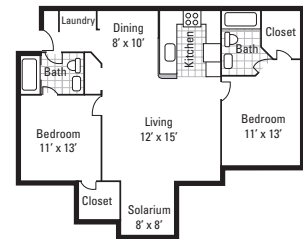
Blanchard

1 Bedroom, 1 Bath
738 sq. ft.
Starting at \$1420



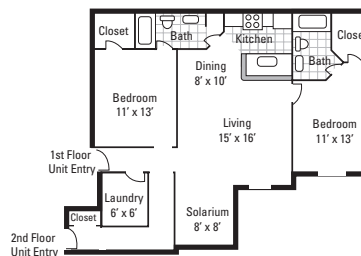
Conway

1 Bedroom, 1 Bath
832 sq. ft.
Starting at \$1450



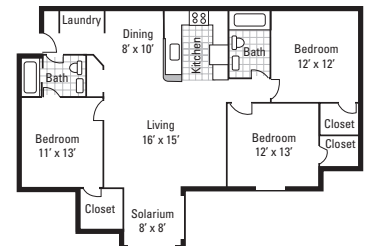
Downey

2 Bedroom, 2 Bath
1002 sq. ft.
Starting at \$1651



Eola

2 Bedroom, 2 Bath
1085 sq. ft.
Starting at \$1681



Ivanhoe

3 Bedroom, 2 Bath
1175 sq. ft.
Starting at \$2048

Solis at Winter Park

7502 Sun Key Blvd., Winter Park, FL 32792
407.677.8884

WEBSITE AND EMAIL

www.soliswinterparkflorida.com
solis@zrsmanagement.com

UTILITIES AND FEATURES

- Water/sewer not included in rent
- Valet trash \$30/month
- Washer/dryer included in every apartment
- Renters insurance required
- High-speed Internet \$85/month

AMENITIES

- Gated community
- 2 swimming pools and 1 Jacuzzi
- 2 illuminated tennis courts
- Illuminated sand volleyball court
- Picnic tables and barbecue grills
- Fitness center with rock climbing wall open 8 a.m. to 10 p.m.
- New CrossFit gym
- Dog park
- Select renovated units with quartz countertops
- Resident lounge with pool table

LOCATION

Located off of Goldenrod Rd., 1.3 miles east of campus

APPLICATION FEES

\$75 per applicant/guarantor

MOVE-IN COSTS

\$250 (non-refundable) administration fee
\$750-1 month's rent security deposit

PET DEPOSITS/FEES

\$400 (non-refundable) pet fee
\$25/month pet rent per pet
Maximum 2 pets per apartment
Breed restrictions apply

ADDITIONAL INFORMATION

Online payments accepted via credit, debit, and e-check
Virtual and in-person walk-in tours available; no appointment needed

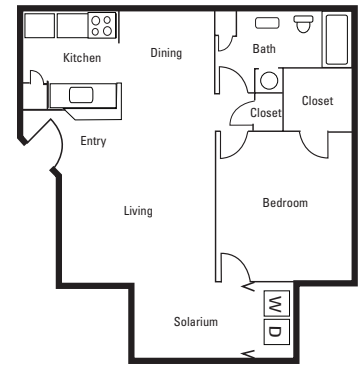
HOURS

M-F	9 to 6	Sat	10 to 5
		Sun	Closed



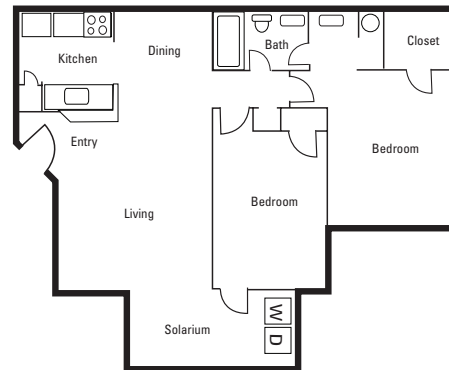
A1

1 Bedroom, 1 Bath
600 sq. ft.
Starting at \$1300*



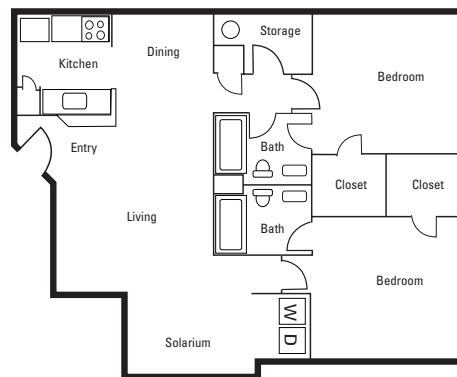
A2

1 Bedroom, 1 Bath
750 sq. ft.
Starting at \$1228*



B1

2 Bedroom, 1 Bath
906 sq. ft.
Starting at \$1588*



B2

2 Bedroom, 2 Bath
1030 sq. ft.
Starting at \$1579*

**Prices change daily based on current market availability.
Please call complex for current pricing. Refer to Apartment Information section at the front of the guide for more info.*

Stonecastle

2015 New Stonecastle Terr., Winter Park, FL 32792
407.599.4120 407.599.4121 fax

WEBSITE AND EMAIL

www.bhmanagement.com
stonecastle@livebh.com

UTILITIES AND FEATURES

- Water/sewer not included in rent
- Washer/dryer included in every apartment
- Renters insurance required with \$100,000 personal liability
- Valet trash \$30/month
- Pest control \$3/month
- Bulk Internet \$65/month (required)
- Garages \$125/month standard or \$100/month with at least 7-month rental—first month free
- Additional storage \$25/month

AMENITIES

- Gated community
- 24-hour fitness studio
- Detached garages/storage available
- Picnic and barbecue area
- Resort-style pool
- Tennis court
- Bark park

LOCATION

Located off of Greencastle Blvd., 2 miles north of campus

APPLICATION FEES

\$75 per applicant/guarantor

MOVE-IN COSTS

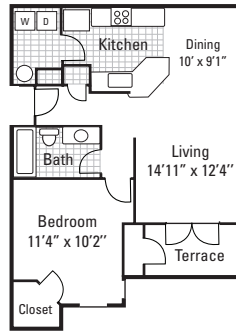
\$200 (refundable upon move-in) administration fee
\$400–750 (refundable) security deposit based on credit or \$200–\$375 (non-refundable) security deposit based on credit

PET DEPOSITS/FEES

\$300–450 pet fee per pet, up to 2 pets
\$25/month pet rent per pet
Breed restrictions apply

ADDITIONAL INFORMATION

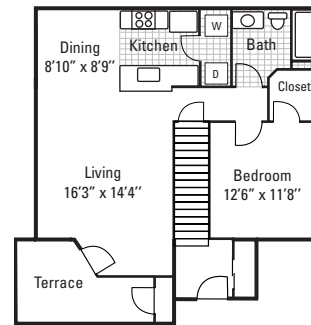
Online payments accepted via credit, debit, and e-check
Self-guided tours available after business hours, check website for more details



The Ashlar

1 Bedroom, 1 Bath
780 sq. ft.

Starting at \$1721*



The Belfry

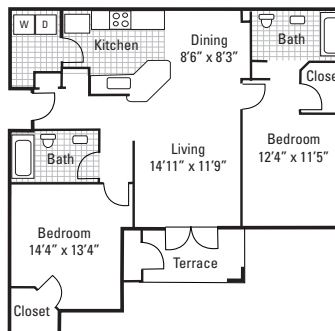
1 Bedroom, 1 Bath

Downstairs: 760 sq. ft.

Starting at \$1509*

Upstairs: 830 sq. ft.

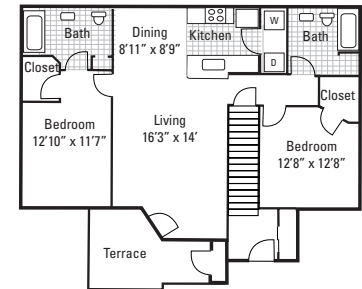
Starting at \$1750*



The Lance

2 Bedroom, 2 Bath
1059 sq. ft.

Starting at \$1800*



The Palisade

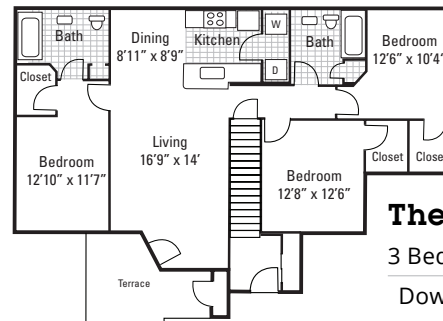
2 Bedroom, 2 Bath

Downstairs: 1071 sq. ft.

\$1850*

Upstairs: 1141 sq. ft.

Starting at \$1940*



The Cheshire

3 Bedroom, 2 Bath

Downstairs: 1230 sq. ft.

Starting at \$2100*

Upstairs: 1330 sq. ft.

Starting at \$2204*

HOURS

M-F	10 to 6	Sat	10 to 5
		Sun	Closed**

**Open BTS Sundays from 1 to 4

**Prices change daily based on current market availability.
Please call complex for current pricing. Refer to Apartment
Information section at the front of the guide for more info.*

Summerlin at Winter Park

3207 Rosebud Ln., Winter Park, FL 32792
407.678.5611 407.678.8210 fax

WEBSITE AND EMAIL

www.summerlinatwinterpark.com
summerlin@cmcapt.com

UTILITIES AND FEATURES

- Water/sewer not included in rent
- Trash/pest control included in rent
- Washer/dryer available in select apartments
- Furnished units for an additional \$150/month* (based on availability)

AMENITIES

- Furnished units available*
- Gated community with perimeter fencing
- Clubhouse with pool table and 65" TV open during business hours
- 24-hour laundry facilities
- Picnic area and grill
- State-of-the-art fitness center
- Resort-style swimming pool and spa
- Dog park

LOCATION

Located off of N. Goldenrod Rd., 1.8 miles southeast of campus

APPLICATION FEES

\$50 per applicant/guarantor—waived for Full Sail students

MOVE-IN COSTS

\$135 (refundable) administration fee
\$0 to 1 and a half month's rent (refundable)
security deposit with approved credit or apply with Obligo for security deposit

PET DEPOSITS/FEES

\$350 pet fee per pet, up to 2 pets
\$25/month pet rent per pet
Breed restrictions apply

ADDITIONAL INFORMATION

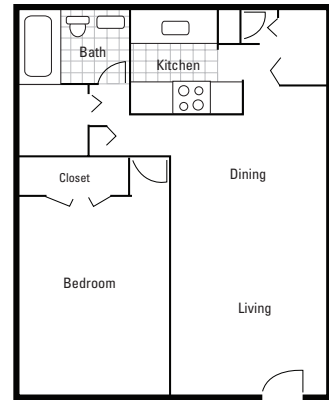
Full Sail students unable to secure living expenses will be allowed to cancel an apartment reservation without penalty

HOURS

M-F	9 to 5:30	Sat	10 to 4
		Sun	Closed

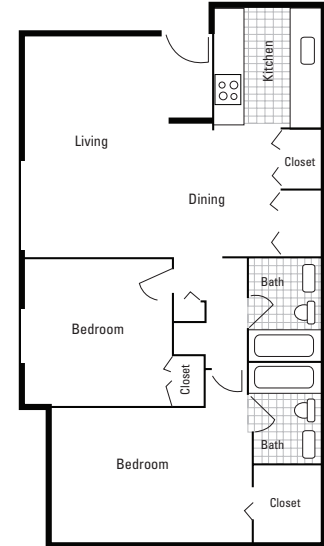
Aqua

1 Bedroom, 1 Bath
723 sq. ft.
Starting at \$1326*



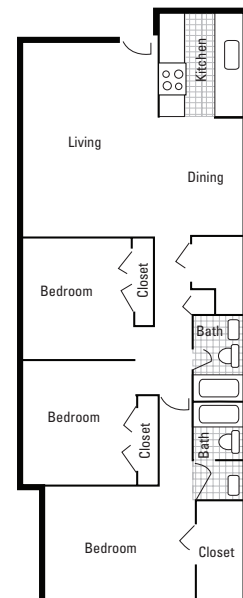
Gardenia

2 Bedroom, 2 Bath
980 sq. ft.
Starting at \$1502*



Sunshine

3 Bedroom, 2 Bath
1232 sq. ft.
Starting at \$1920*



**Prices change daily based on current market availability. Please call complex for current pricing. Refer to Apartment Information section at the front of the guide for more info.*

The Taylor

2000 Village Ln., Winter Park, FL 32792
877.780.0145

WEBSITE AND EMAIL

www.taylorwp.com
thetaylor.info@fpimgt.com

UTILITIES AND FEATURES

- Utilities not included in rent
- Pest control \$5/month
- Valet trash \$25/month
- Renters insurance required
- Shortest lease term is 7 months
- Granite counter tops
- Stainless steel appliances
- Screened porches and private balconies
- Washer/dryer in select units

AMENITIES

- Newly renovated apartments
- Resort-style Olympic swimming pool with sun deck
- Dry sauna
- Fitness center
- Package service
- On-site laundry facilities
- Tennis court
- Picnic area with barbecue
- Reserved covered parking
- Clubhouse

LOCATION

Located off of Aloma Ave., 1.7 miles from campus

APPLICATION FEES

\$125 per adult over 18—waived for Full Sail students
\$300 administration fee—waived for Full Sail students

MOVE-IN COSTS

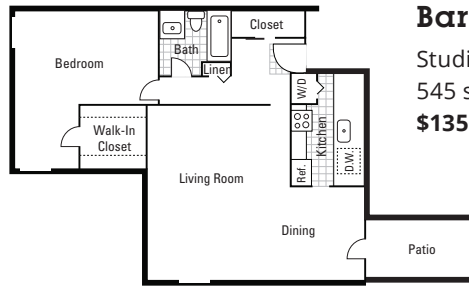
Up to 1 month's rent security deposit (refundable) depending on credit
\$200 holding fee (credited toward deposit or first month's rent depending on credit)

PET DEPOSITS/FEES

\$500 pet fee (non-refundable) per pet, up to 2 pets
\$25/month pet rent per pet

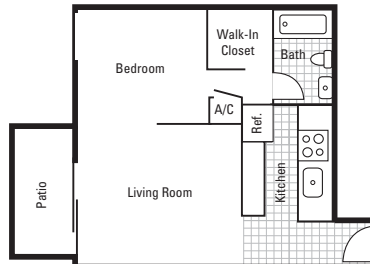
HOURS

M-F	9 to 6	Sat	10 to 5
		Sun	Closed



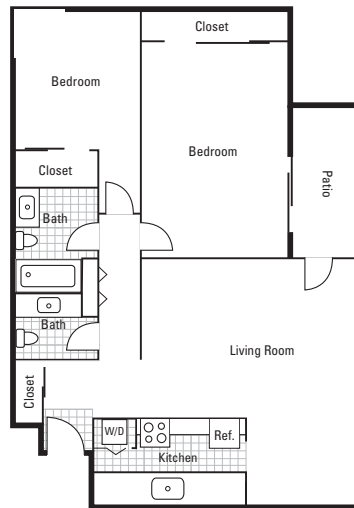
Barony

Studio
545 sq. ft.
\$1354*



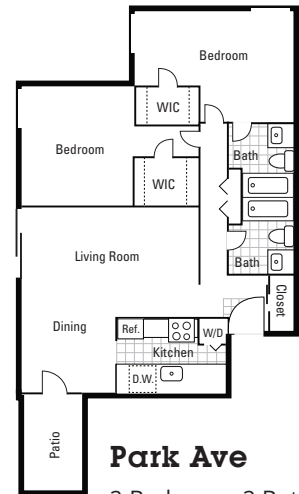
Squire

1 Bedroom, 1 Bath
873 sq. ft.
\$1631*



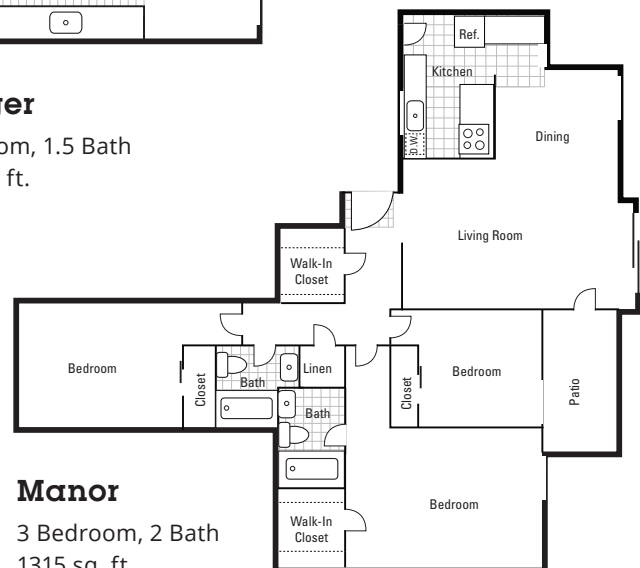
Villager

2 Bedroom, 1.5 Bath
1087 sq. ft.
\$1693*



Park Ave

2 Bedroom, 2 Bath
1105 sq. ft.
\$1808*



Manor

3 Bedroom, 2 Bath
1315 sq. ft.
\$2277*

**Prices change daily based on current market availability. Please call complex for current pricing. Refer to Apartment Information section at the front of the guide for more info.*

University Park Apartments

9201 Nelson Park Cir., Orlando, FL 32817
833.351.4483 407.207.1491 fax

WEBSITE AND EMAIL

<https://universityparkapartments.com>
leasing@universityparkapartments.com

UTILITIES AND FEATURES

- Water/sewer/gas not included in rent
- Valet trash \$27.50/month
- Pest control \$3/month; \$3.99/month service charge
- Washer/dryer in every apartment
- Renters insurance not required—liability coverage \$18/month
- Deposit waiver \$33/month

AMENITIES

- Dog park
- BBQ grills/picnic area
- Pool with gazebo area and lounge chairs
- Fitness center
- Playground
- Coffee bar with snacks
- E-lounge with Mac computers and unlimited printing

LOCATION

Located off of N. Econlockhatchee Tr., 4.1 miles southeast of campus

APPLICATION FEES

\$85 per applicant—waived for Full Sail students

MOVE-IN COSTS

\$0 standard deposit based on approval
\$250 (non-refundable) administration fee—
waived for Full Sail students
\$120 gas setup fee

PET DEPOSITS/FEES

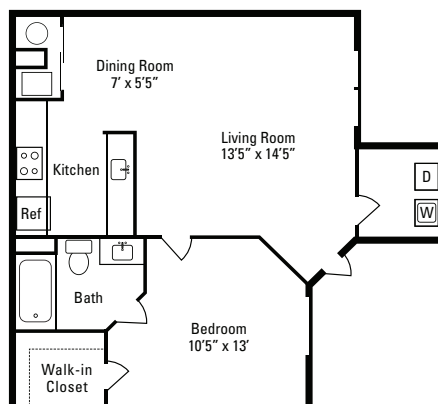
\$350–500 (non-refundable) pet fee
\$35/month pet rent per pet; maximum of 2 pets
Breed restrictions apply
No weight limit

ADDITIONAL INFORMATION

Online rent payments accepted

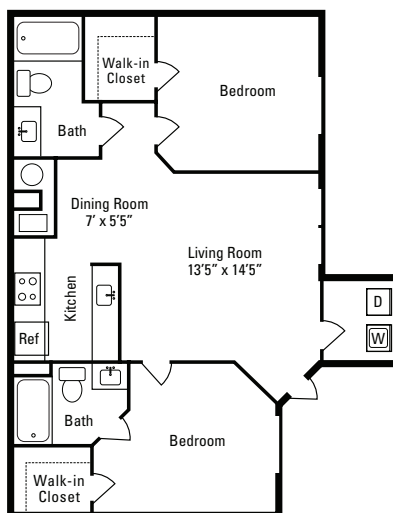
HOURS

M–F	9 to 6	Sat	10 to 5
		Sun	1 to 5



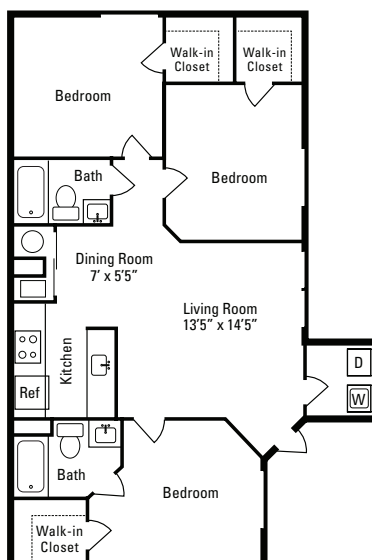
Azalea

1 Bedroom, 1 Bath
645 sq. ft.
Starting at \$1425
\$75 flat rate for gas



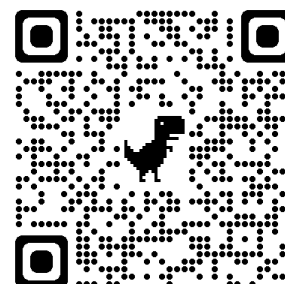
Baldwin

2 Bedroom, 2 Bath
881 sq. ft.
Starting at \$1569
\$90 flat rate for gas



Canaveral

3 Bedroom, 2 Bath
1,043 sq. ft.
Starting at \$1734
\$95 flat rate for gas



Vale East

9010 Running Bull Rd., Orlando, Florida 32825
407.214.2276

WEBSITE AND EMAIL

<https://valeeast.com>
leasing@valeeast.com

UTILITIES AND FEATURES

- Electricity/water/sewer/Internet included in rent
- Renters insurance required
- Washer/dryer included in all apartments
- Valet trash \$20/month per person
- One-time parking access fee \$220
- Reserved parking spot \$75/month (optional)
- One-time utility set-up fee \$60
- Utility billing fee \$30/month

AMENITIES

- Fully furnished apartments
- On-site security officers
- 24-hour surveillance monitoring
- Gated community
- Resort-style pool with cabanas, outdoor kitchen, and Zen garden
- 24-hour computer and printing lab
- Package concierge
- Community room, study areas, and dedicated conference rooms
- Coffee bistro bar and vending machines
- 24-hour fitness center
- Sauna and steam room
- Indoor and outdoor recreation space with bowling lanes, golf simulator, cornhole, ping-pong, billiards, and shuffleboard
- Individual pantries for each resident
- Granite countertops, slate appliances, wood-style flooring, and walk-in closets

LOCATION

Located off of N. Econlockhatchee Tr., 6.5 miles southeast of campus

APPLICATION FEES

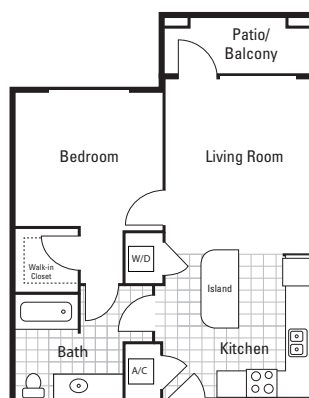
\$85 application fee

MOVE-IN COSTS

\$250 (non-refundable) administrative fee
\$295 (refundable) security deposit

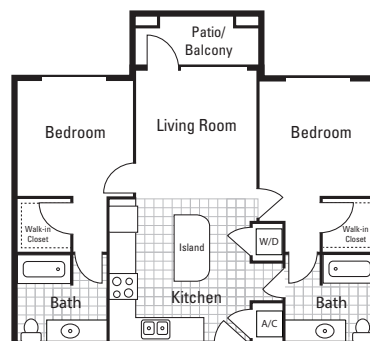
PET DEPOSITS/FEES

\$350 (non-refundable) pet fee for 1 pet
\$500 (non-refundable) pet fee for 2 pets
\$25-45/month pet rent per pet
Limit 2 pets per unit; breed restrictions apply



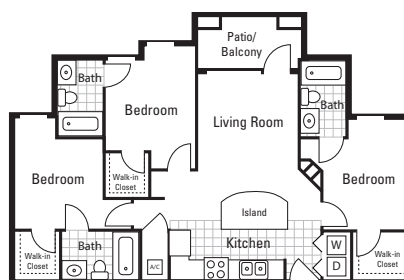
Graduate

1 Bedroom, 1 Bath
672 sq. ft.
Starting at \$1999



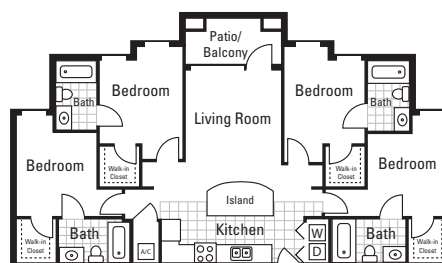
Atlas

2 Bedroom, 2 Bath
940 sq. ft.
Starting at \$1299 per person



Oakridge

3 Bedroom, 3 Bath
1147 sq. ft.
Starting at \$1199 per person



Matador

4 Bedroom, 4 Bath
1393 sq. ft.
Starting at \$1099 per person

HOURS

M-F	9 to 6	Sat	10 to 5
		Sun	Closed

Venue at Winter Park

5 Autumn Breeze Way, Winter Park, FL 32792
407.972.0272

WEBSITE AND EMAIL

www.venueatwinterpark.com
winterpark@vidaltalife.com

UTILITIES AND FEATURES

- Flat rate for water/sewer/pest control/valet trash/cable/Internet—utility package based on apartment size
- Washer/dryer included in all 2- and 3-bedroom apartments

AMENITIES

- Renovated apartments
- Available reserved parking \$25/month or covered parking \$50/month—first 2 months free for Full Sail students
- USB charging stations in select apartments
- Dog park
- 3 resort-style swimming pools
- Outdoor kitchens
- Clubhouse with catering kitchen and lounge
- Wi-Fi café with computers
- 24-hour fitness center with spin room
- Package center with 24-hour access

LOCATION

Located off of Semoran Blvd., 1.1 miles north of campus

APPLICATION FEES

\$75 per applicant—waived for Full Sail students

MOVE-IN COSTS

\$200 administration fee—waived for Full Sail students
\$350–500 (non-refundable) move-in fee

PET DEPOSITS/FEES

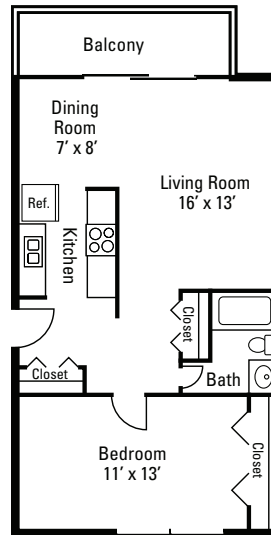
\$400–600 pet fee per pet
\$250–600 pet deposit (refundable) per pet
\$25–45/month pet rent per pet, up to 2 pets
No breed restrictions (call for details)

ADDITIONAL INFORMATION

Online payments accepted via e-check with account and routing number
Virtual and in-person tours available

HOURS

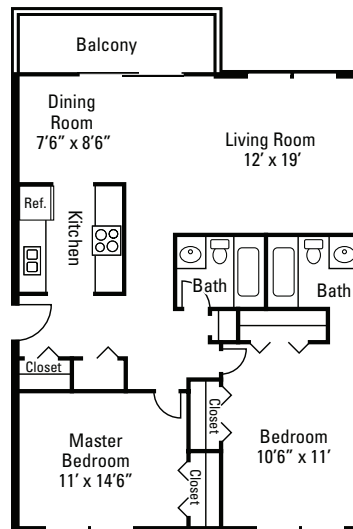
M–F	8:30 to 5:30	Sat	10 to 5
		Sun	Closed



Sable

1 Bedroom, 1 Bath
720 sq. ft.

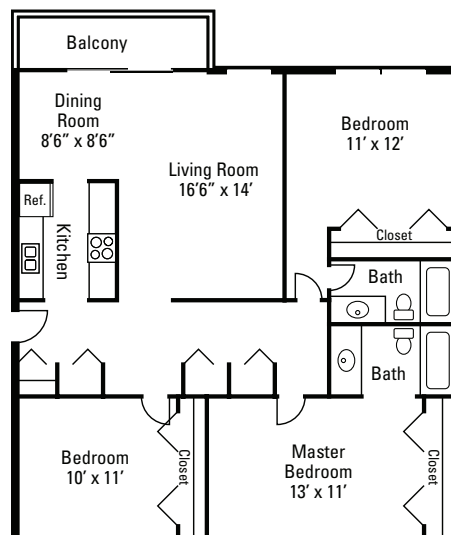
Starting at \$1290
\$247.20 utility package



Maple

2 Bedroom, 2 Bath
976 sq. ft.

Starting at \$1652
\$317.20 utility package



Laurel

3 Bedroom, 2 Bath
1270 sq. ft.

Starting at \$1852
\$337.20 utility package

Villa Valencia

8100 Claire Ann Dr., Orlando, FL 32825
407.381.0500 407.381.0128 fax

WEBSITE AND EMAIL

www.villavalenciaorlando.com
villavalencia@zrsmanagement.com

UTILITIES AND FEATURES

- Water/sewer not included in rent
- Trash and pest control included in rent
- Washer/dryer in select units; connections in all
- Renters insurance required
- Garages available for \$150/month

AMENITIES

- Gated community
- Pool and sundeck
- Business area
- 24-hour fitness room
- Playground

LOCATION

Located off of Valencia College Ln. and Chickasaw Tr., 5 miles southeast of campus

APPLICATION FEES

\$95 per applicant/guarantor

MOVE-IN COSTS

\$200 (non-refundable) administration fee
\$650 (refundable) security deposit for
1-bedroom units
\$750 (refundable) security deposit for
2-bedroom units
\$850 (refundable) security deposit for
3-bedroom units

PET DEPOSITS/FEES

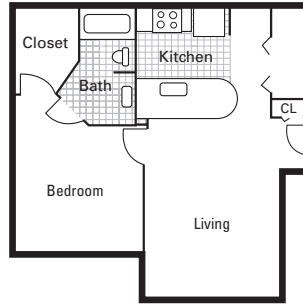
\$350 pet fee, up to 2 pets
\$25/month pet rent per pet
45 lb. maximum; no aggressive breeds permitted

ADDITIONAL INFORMATION

Online payments available via credit and debit
Virtual tour available on the website

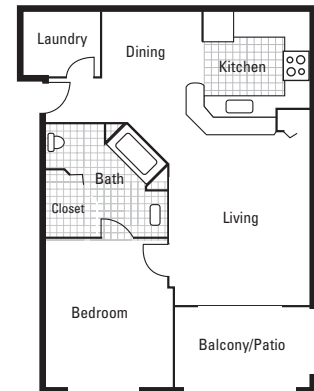
HOURS

M-F	9 to 5:30	Sat	10 to 5
		Sun	Closed



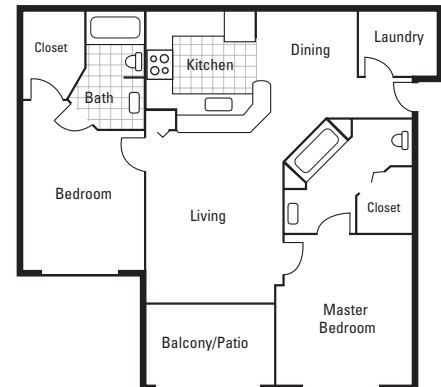
1 Bedroom

1 Bedroom, 1 Bath
615 sq. ft.
Starting at \$1416



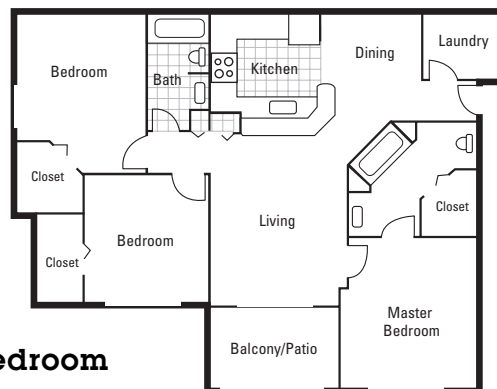
1 Bedroom

1 Bedroom, 1 Bath
716 sq. ft.
Starting at \$1561



2 Bedroom

2 Bedroom, 2 Bath
962 sq. ft.
Starting at \$1681



3 Bedroom

3 Bedroom, 2 Bath
1142 sq. ft.
Starting at \$1911

Vintage Winter Park

7490 Dwell Well Way, Winter Park, FL 32792
407.382.8002

WEBSITE AND EMAIL

www.vintagewinterpark.com
vintagewinterpark@ram-mgt.com

UTILITIES AND FEATURES

- Flat rate for water/sewer/valet trash/pest control/cable/Internet—utility package based on apartment size
- Full-size washer/dryer in every apartment
- Renters insurance required

AMENITIES

- Luxury modern apartment homes
- Elevator access in all buildings
- Bike lockers and repair center
- Fully gated community
- Clubhouse with billiards, coffee center, and wine station
- Community offers high-speed Internet and cable
- Resort pool with hammock garden
- 24-hour virtual fitness training center by Wellbeats
- Cardio room and open-air yoga meditation lawn
- Private conference center
- Electric car-charging station
- Bark park and pet spa
- Community-wide Wi-Fi service
- 24-hour fitness center

LOCATION

Located on Goldenrod Rd., 1.6 miles northeast of campus

APPLICATION FEES

\$100 per applicant/guarantor
\$300 administrative fee per apartment

MOVE-IN COSTS

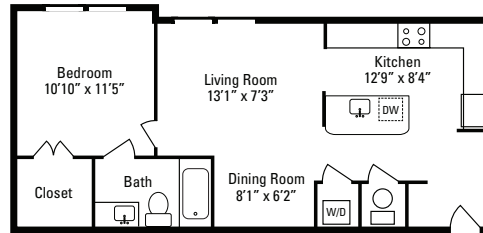
Minimum of \$500 security deposit with approved credit and rental verification

PET DEPOSITS/FEES

\$350 (non-refundable) pet deposit for 1 pet; \$550 for 2 pets
\$25/month pet rent per pet
No weight limit—breed restrictions apply

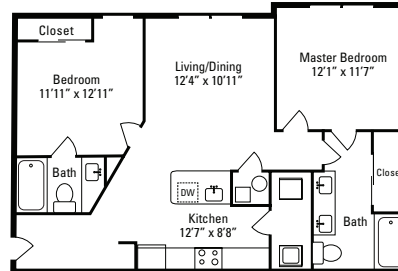
ADDITIONAL INFORMATION

Call for more information about Full Sail student specials
Online payments accepted via credit, debit, and e-check with applicable fees



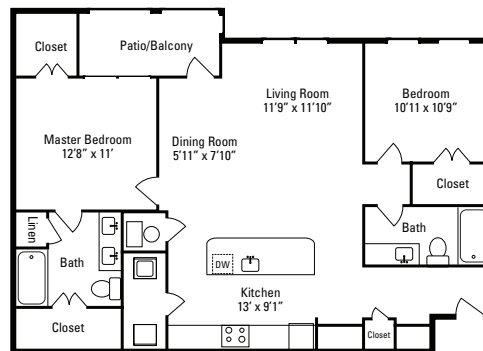
Phelps

1 Bedroom, 1 Bath
668 sq. ft.
Starting at \$1793*
\$145 utility package



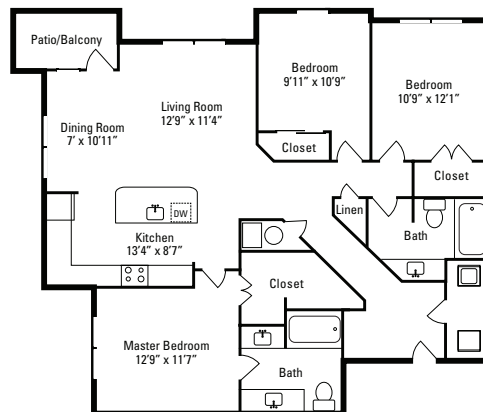
Morse

2 Bedroom, 2 Bath
952 sq. ft.
Starting at \$2112*
\$155 utility package



Mead

2 Bedroom, 2 Bath
1158 sq. ft.
Starting at \$2375*
\$155 utility package



Corness

3 Bedroom, 2 Bath
1399 sq. ft.
Starting at \$2967*
\$160 utility package

HOURS

M-F	9 to 6	Sat	10 to 5
		Sun	Closed

**Prices change daily based on current market availability. Please call complex for current pricing. Refer to Apartment Information section at the front of the guide for more info.*

Westmount at Winter Park

1701 Lee Rd., Winter Park, FL 32789
407.628.0301

WEBSITE AND EMAIL

<https://www.westmountwinterpark.com>
westmountwp@greystar.com

UTILITIES AND FEATURES

- Water/sewer/trash not included in rent
- Washer/dryer included in some apartments
- Reserved parking \$25/month (optional)

AMENITIES

- Stainless steel appliances in some apartments
- Microwave included
- Screened-in patios and balconies
- Resort-style sundeck and pool
- Pet park
- 24-hour fitness center

LOCATION

Located off of Lee Rd., 6.5 miles west of campus

APPLICATION FEES

\$75 per applicant/guarantor

MOVE-IN COSTS

\$200 administration fee
\$200 to 1 month's rent (refundable) security
deposit based on credit

PET DEPOSIT/FEES

\$300–600 pet fee, up to 2 pets
\$20/month pet rent per pet
Breed restrictions apply

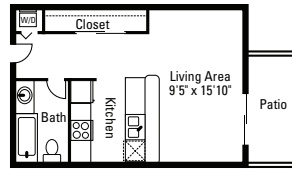
ADDITIONAL INFORMATION

Online payments accepted—credit cards
accepted; fee varies by card
Optional wood-vinyl flooring and lake views
available
E-check payments accepted—no service fee

HOURS

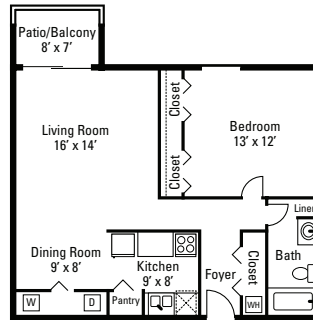
M–F	9 to 6	Sat	10 to 5
		Sun	Closed

**Prices change daily based on current market availability.
Please call complex for current pricing. Refer to Apartment
Information section at the front of the guide for more info.*



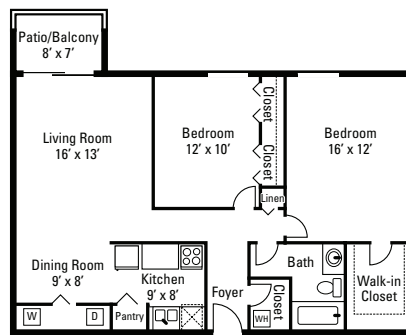
The Rollins

Studio
409 sq. ft.
Starting at \$1479*



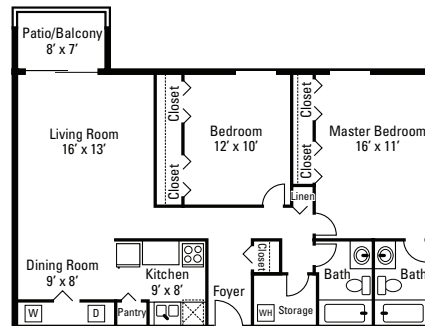
The Morse

1 Bedroom, 1 Bath
776 sq. ft.
Starting at \$1633*



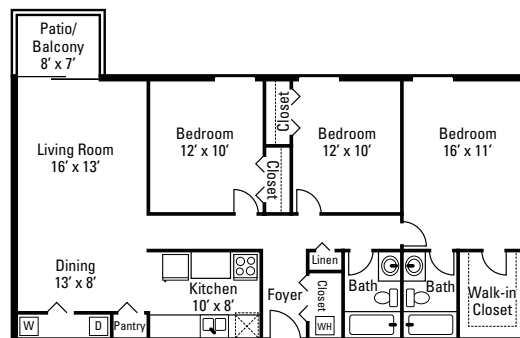
The Knowles

2 Bedroom, 1 Bath
997 sq. ft.
Starting at \$1779*



The Melbourne

2 Bedroom, 2 Bath
1047 sq. ft.
Starting at \$2064*



The Park

3 Bedroom, 2 Bath
1218 sq. ft.
Starting at \$2105*

Whisper Lake

3250 Whisper Lake Ln., Winter Park, FL 32792
833.509.9609 407.677.0298 fax

WEBSITE AND EMAIL

www.whisperlakeapts.com
whisperlake.fullsailhousingguide.priderock@aptleasing.info
leasing@whisperlakeapts.com

UTILITIES AND FEATURES

- Flat rate for water/sewer/trash/pest control
- Washer/dryer connections in all apartments
- Residents pay \$18/month property liability waiver per unit
- Washer/dryer rental \$35/month

AMENITIES

- Classic and renovated units available
- 2 on-site mobile-app-operated laundry facilities
- Game room
- Business center
- Waterfront swimming pool
- Lighted tennis and racquetball courts
- Volleyball and basketball courts
- 24-hour express maintenance
- 24-hour fitness center
- Spacious bark park
- Outdoor CrossFit park

LOCATION

Located off of Semoran Blvd., 0.8 miles south of campus

APPLICATION FEES

\$75 per applicant
\$75 for co-applicants

MOVE-IN COSTS

\$250 (non-refundable) administration fee
\$0 deposit for those who qualify

PET DEPOSITS/FEES

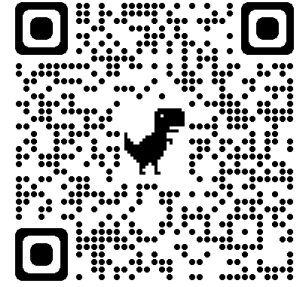
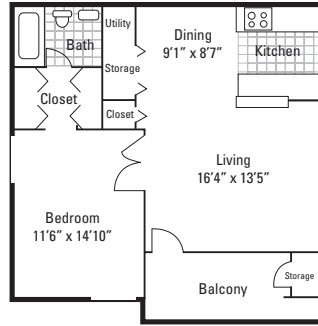
\$400 (non-refundable) pet fee per pet
\$20/month pet rent per pet
No weight limit—breed restrictions apply

ADDITIONAL INFORMATION

7-12 month leases
Extra charges may apply for leases of fewer than 12 months

HOURS

M-F	8:30 to 5:30	Sat	10 to 5
		Sun	Closed

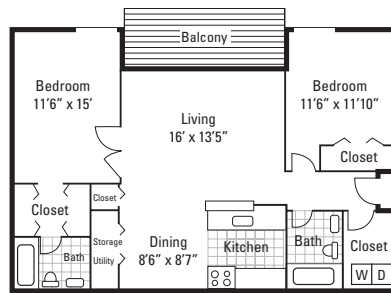


Garden Unit

1 Bedroom, 1 Bath
750 sq. ft.

\$1410-1510*

**\$68 flat rate for water/sewer/
trash/pest control**

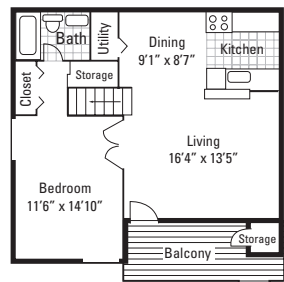
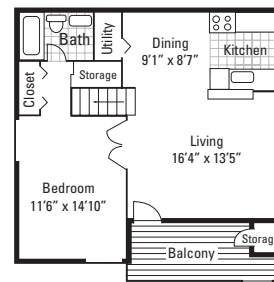
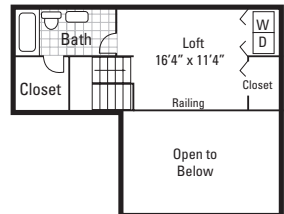
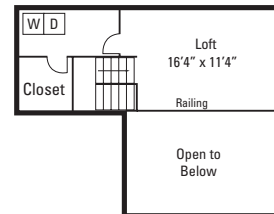


Garden Unit

2 Bedroom, 2 Bath
1050 sq. ft.

\$1710-1790*

**\$78 flat rate for water/
sewer/trash/pest control**



Loft

2 Bedroom, 1 Bath
1000 sq. ft.

\$1690*

**\$78 flat rate for water/
sewer/trash/pest control**

Loft

2 Bedroom, 2 Bath
1000 sq. ft.

\$1760*

**\$78 flat rate for water/
sewer/trash/pest control**

**Prices change daily based on current market availability.
Please call complex for current pricing. Refer to Apartment
Information section at the front of the guide for more info.*

Windrift Apartments

949 Crowsnest Cir., Orlando, FL 32825
954.507.0897

WEBSITE AND EMAIL

www.livewindrift.com

UTILITIES AND FEATURES

- Flat rate \$191.20/month covers cable, Wi-Fi, valet trash, pest control, amenities, billing fee, risk management
- Water included—range from \$27–34/m
- Washer/dryer in all units

AMENITIES

- Front door digital locks
- Digital thermostats
- 24-hour fitness center
- Gated dog park area
- Soccer field
- Pool
- Car wash area
- Washer/dryer provided in all units
- Kitchen appliances included
- Screened patios
- Playground

LOCATION

Located off of N. Goldenrod Rd., 4.5 miles from campus

APPLICATION FEES

\$75 (non-refundable) application fee per applicant—waived for Full Sail students

MOVE-IN COSTS

\$350–500 (non-refundable) security deposit
\$200 (non-refundable) administration fee—waived for Full Sail students

PET DEPOSITS/FEES

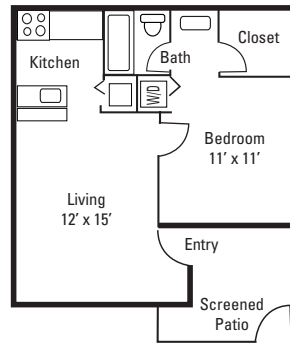
\$500 (non-refundable) pet fee for 1 pet
\$250 (non-refundable) additional pet fee for 2nd pet
\$25/month pet rent per pet

ADDITIONAL INFORMATION

7–15 month leases

HOURS

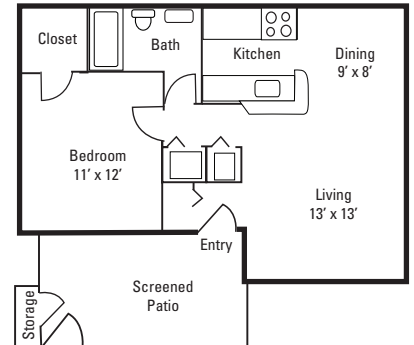
M–F	9 to 6	Sat	10 to 5
		Sun	Closed



1 Bedroom

1 Bedroom, 1 Bath
567 sq. ft.

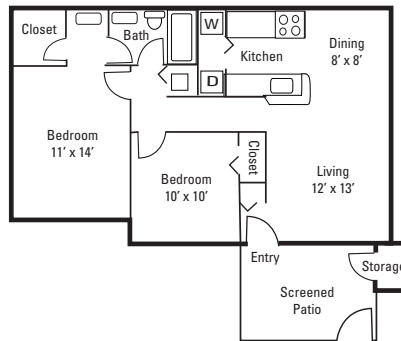
Starting at \$1321*



1 Bedroom

1 Bedroom, 1 Bath
760 sq. ft.

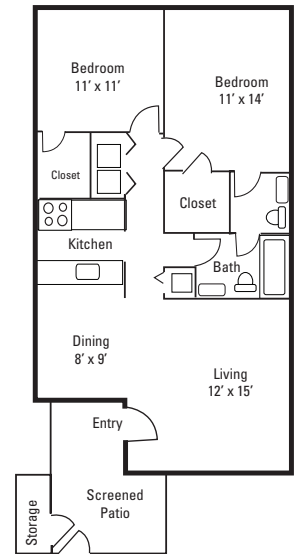
Starting at \$1416*



2 Bedroom

2 Bedroom, 1 Bath
912 sq. ft.

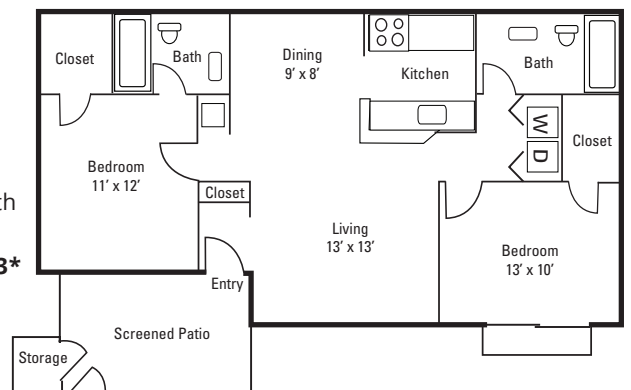
Starting at \$1596*



2 Bedroom

2 Bedroom, 1½ Bath
1025 sq. ft.

Starting at \$1672*



2 Bedroom

2 Bedroom, 2 Bath
1077 sq. ft.

Starting at \$1713*

**Prices change daily based on current market availability. Please call complex for current pricing. Refer to Apartment Information section at the front of the guide for more info.*

Winter Park Woods

115 Scottsdale Square, Winter Park, FL 32792
321.404.6330

WEBSITE AND EMAIL

www.winterparkwoodsapartments.com
wpwoodsteam@rentprosper.com

UTILITIES AND FEATURES

- Water/trash/sewer/pest control not included in rent
- Washer/dryer included in most units
- Renters and liability insurance required

AMENITIES

- Within walking distance to campus
- Located on same side of road as campus; no crossing of major highways and roads needed
- Modern, trendy architecture distinctive from all local apartments
- Spacious and unique 2-story lofts and townhouse-style apartment condos available
- Tranquil pool with lounge seating and outdoor grills
- Mature trees and serene woods
- Private patios

LOCATION

Located off of S. Semoran Blvd., 0.5 miles south of campus and University Blvd.

APPLICATION FEES

\$75 application fee—half off for Full Sail students
\$100 administration fee—half off for Full Sail students

MOVE-IN COSTS

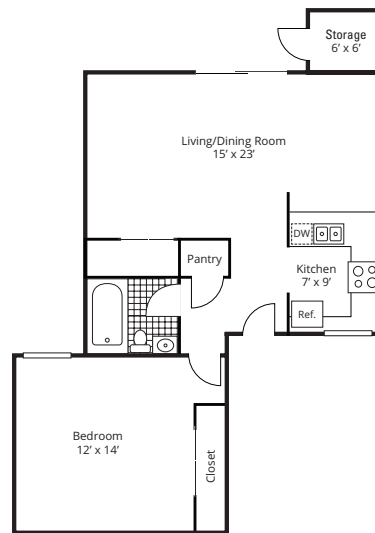
\$500 standard or higher security deposit (refundable)—dependent on approved credit

PET DEPOSITS/FEES

\$25–100 pet processing fee
\$25–100/month pet rent
Maximum of 1 pet
Fees/rent dependent upon the pet screening report; approved support animals have no fees/rent
Visit rentprosper.petscreening.com for more information
Breed restrictions apply

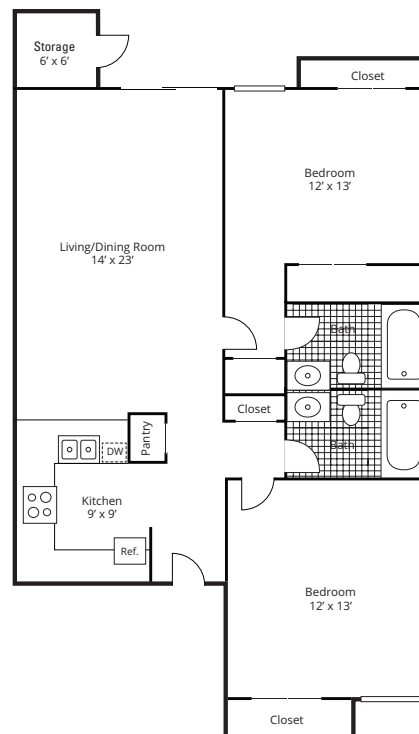
HOURS

M–F	9 to 5	Sat	By appointment
		Sun	Closed



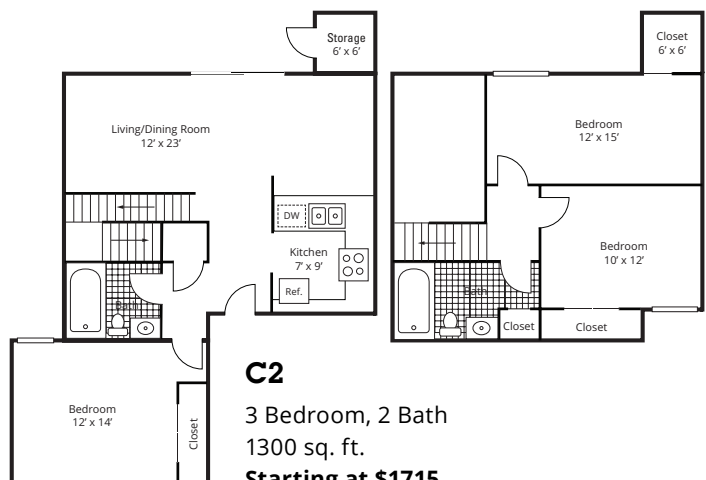
A3

1 Bedroom, 1 Bath
785 sq. ft.
Starting at \$1285



B2

2 Bedroom, 2 Bath
1020 sq. ft.
Starting at \$1595



C2

3 Bedroom, 2 Bath
1300 sq. ft.
Starting at \$1715

Woodlands

604 Laurel Cove Ct., Orlando, FL 32825
407.658.6522 407.382.5266 fax

WEBSITE AND EMAIL

www.woodlandsapts.com
woodlands@zrsmanagement.com

UTILITIES AND FEATURES

- Flat rate for trash \$20/month
- Pest control included in rent
- Washer/dryer in every apartment
- Renters insurance required

AMENITIES

- Fitness center
- 3 swimming pools
- Lighted tennis courts and racquetball courts
- Outside storage space for every unit
- Picnic area
- Dog park with obstacle course
- Cathedral ceilings in 3rd floor units
- Courtesy officer on property
- Business center
- Event center available for rent

LOCATION

Located off of Chickasaw Tr., 4.4 miles southeast of campus

APPLICATION FEES

\$65 per applicant/guarantor

MOVE-IN COSTS

\$200 (refundable) administration fee due upon approval
Jetty Surety Bond \$1000–2000

PET DEPOSITS/FEES

\$300–450 pet fee, up to 2 pets
\$20/month pet rent per pet
100 lb. weight limit—breed restrictions apply

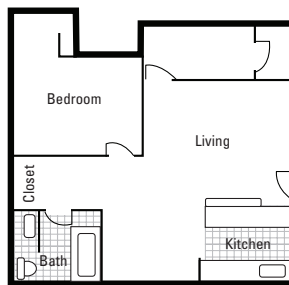
ADDITIONAL INFORMATION

Online payments accepted via credit, debit, and e-check

HOURS

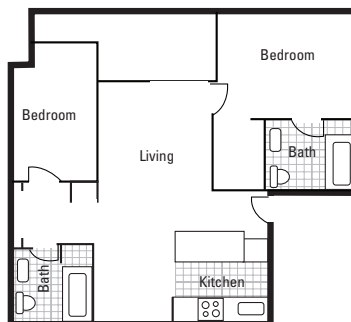
M–F	9 to 6	Sat	10 to 5
		Sun	Closed

**Prices change daily based on current market availability. Please call complex for current pricing. Refer to Apartment Information section at the front of the guide for more info.*



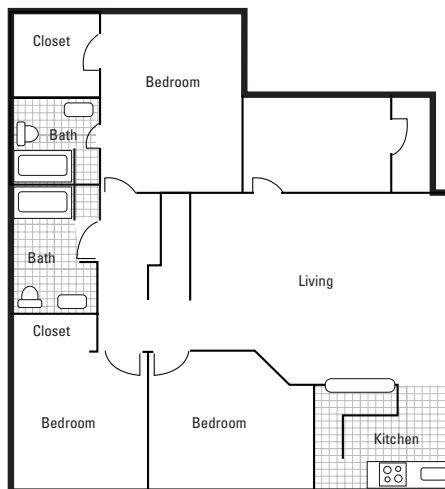
Plan A

1 Bedroom, 1 Bath
703 sq. ft.
\$1203*



Plan B

2 Bedroom, 2 Bath
935 sq. ft.
\$1420*



Plan C

3 Bedroom, 2 Bath
1082 sq. ft.
\$1592*



WHY HOMESTAY ANYWHERE?



Homestay Anywhere offers fully furnished dorm-style apartments shared with other students and interns. Private and shared bedrooms in shared housing includes all basic utilities, housewares and more!

Comparable 1-Bedroom Apartment	HOMESTAY ANYWHERE
Rent: Approximately \$1,625	Dorm-Style Apartments; Private Bedroom \$1,100; Shared \$800
Water, Sewer, Gas & Trash: Extra	Included
Electricity: Extra	Included
Internet: Extra	Included
Furniture: Extra	Included
Housewares: Extra	Included
Cleaning Service: Extra	Included
Lease: Typically 12 months minimum	Lease: 6 months minimum
Income Verification Required	Not required
Credit Check Required	Not required

ADDITIONAL PERKS

Individual Leases: If your roommate moves out, your rent doesn't change.	
In-unit washer and dryer	Parking available

DETAILS AND PRICING

1. Shared Master Bedroom - \$800	Bedroom shared with 1; Bathroom shared with 1
2. Private Standard Bedroom - \$1,100	Private bedroom; Bathroom shared with 1
3. Private Master Bedroom - \$1,300	Private bedroom; Private bathroom
\$500 – Application Fee	\$500 – Security Deposit

APPLY ONLINE AT HOMESTAYANYWHERE.COM

RULES AND REGULATIONS

Important: Please read in its entirety. This article contains very important information. Contact the Housing Department with any questions or concerns.

Applications

Application fees are paid directly to the apartment at the time you apply. Each person occupying the apartment must apply individually and pay a separate application fee, which is non-refundable. All applicants must qualify individually and meet the specific standards of the individual complex.

A credit check, criminal background check, and proof of income will be required for all apartment complexes. Some students may require a cosigner even with proof of income. If you are granted admission into Full Sail University and have a criminal record, your acceptance into an apartment complex is not guaranteed.

Full Sail University does not provide student housing, and the final decision regarding acceptance in these cases rests solely with the apartment complex. If you feel that there may be negative information contained in the check, it is best to discuss this with the complex staff prior to submitting your application. If your application is denied, please contact the Housing Department.

Leases

Leases are legal and binding contracts and should be taken seriously. Each apartment complex has published rules and regulations. Be advised that you may be evicted for nonpayment of rent or noncompliance with the rules and regulations.

An eviction from any property is reported to the credit bureau and will have a negative impact on your credit in the future. If for any reason you have to break your lease, contact the Housing Department immediately. In certain cases, we can offer assistance to you and your family; however, Full Sail University will not assume responsibility for your lease under any circumstances.

Moving In

Before receiving your keys from the leasing office, you will need to sign the lease and have move-in costs covered, and one of the residents will need to arrange to have the electricity activated in their name. Your move-in costs will include application fees, the security deposit, and the first month's rent, which will be prorated for the balance of the month. Depending on your move-in date, the second month's rent may be required as well.

Moving Out

Prior to moving out, you are typically required to give a 60-day written notice to your apartment manager that you plan to vacate the apartment. It will be your responsibility to return the keys to their office before you leave. You will be charged for each day that you keep the keys after your move-out date. Do not expect your deposit to be returned the same day you move out. You will need to leave a forwarding address where a check can be mailed to you. You also need to make arrangements to disconnect your various utilities and provide them with a forwarding address as well so they can mail your final bill to you.

BEFORE YOU BEGIN YOUR ROOMMATE SEARCH

Many students are eager to start searching for a roommate(s) as soon as they enroll. It is very important to thoroughly interview anyone you are considering as a potential roommate. It is equally important for parents to talk with other parents.

Ask lots of questions about potential roommates' habits, responsibilities, and most importantly, how they will be paying for their living expenses. While students need to have both their tuition and living expenses confirmed by the Enrollment Team in order to be on the roommate list, you also want to ensure you feel comfortable with their plan. It is recommended to discuss financial plans with a roommate when you are sharing a lease.

Social Media Websites

The official roommate list can *only* be obtained from the Full Sail Housing Department. It cannot be found on any website. Additionally, Full Sail University's Facebook page, other social media platforms, or outside roommate-finder websites are not the best way to obtain a roommate. Remember that the roommate list provided by the Full Sail Housing team includes enrolled students with the same on-campus start date whose financial plans have been confirmed. These criteria cannot be verified from outside sources.

SUGGESTIONS FOR INTERVIEWING POTENTIAL ROOMMATES

Selecting a roommate is a personal matter. Full Sail's only involvement in this process is to inform you of others who may also be seeking roommates and to pass on information from other students. We make no judgments as to whether or not someone would be a good roommate for you.

At Full Sail, you have the advantage of choosing your roommate, so prepare a list of questions. Some important things to talk about when considering someone as a roommate include:

- How will your roommate pay for their portion of the rent, utilities, and other living expenses? Openly discuss expectations and responsibilities so you are both on the same page.
- Discuss your personal and shared space expectations. Do you mind if your roommate comes into your room without permission to borrow something, or do you want your room to be strictly off-limits? Be sure to clearly define your boundaries.
- Talk about grocery shopping. Will you shop together and split the bill, or will you shop separately? Do you mind your roommate sharing your milk, potato chips, soda, etc.? Be specific in your requests.
- Discuss cleanliness. Most people think that they are average when it comes to tidiness, so be sure to define "average." For example, is it acceptable for dishes to be left in the sink overnight, or should they go in the dishwasher? Will there be a cleaning schedule for the common rooms of the house? How will the garbage duties be set up? Again, it is important to be specific.
- Talk about your social habits. Is it okay for your roommate to have parties in the apartment, or should the party be held elsewhere? Is it alright for your roommate to invite people to the apartment that you do not know? You should also discuss each other's needs for when you are studying and sleeping.
- Talk openly about recreational drugs, alcohol, smoking/vaping, and having significant others over at the apartment. If these things are not okay with you, be honest about it. This is not the time to compromise your personal feelings or beliefs on sensitive topics.
- Discuss all expectations that might compromise a friendly living relationship up front. It is much easier to prevent roommate problems before you move in together than it is to fix them afterward.

Also, when you are interviewing others, be sure to call and/or video chat with a potential roommate before deciding. Do not rely on email and text alone. You need to actually speak to the fellow student you are interviewing. This will help you get a better idea of what a person is really like.

Finally, don't be in such a hurry to find your roommate. This can be the longest process with your housing and relocation plans, and it should be. To give yourself plenty of time to interview and find the best roommate, it is important to have your financial tasks completed and confirmed by your Enrollment Guide Team as soon as possible.

LIVING WITH A CURRENT STUDENT

The Housing Department not only helps incoming students find roommates, but we also assist current students who need to find new roommates. You may receive a call from one of these students. If you are considering moving in with a student already attending Full Sail, here are a few things that you must keep in mind:

- You must be added to the lease with the current student. All apartment complexes (and even some private landlords) require that everyone who lives in the dwelling must be on the lease. If the complex finds that you are living in the apartment but not on the lease, then you will be given a short amount of time to apply and be approved to live there. Failure to do so will result in eviction of everyone in the apartment.
- The qualification process for being added to the lease is exactly the same as if you were applying for a new lease. You may be required to provide proof of income to be added to the lease.
- If you move in with a current student, there is a good chance that they will graduate before you do. This means that at some point during your studies, you will need to find a new roommate and possibly a new apartment.
- It is important for you to view the apartment that you are considering moving into before you sign the lease. As soon as you sign the lease, you immediately become responsible for half of any damage that was caused before you moved in. To be certain about the accommodations, arrange a video call with the current student to view the apartment you are considering moving into.

If you have any questions or concerns about anything that you have read here, please contact the Housing Department immediately to discuss them.

Attention Students, Faculty & Staff

CORT MAKES FURNISHING YOUR APARTMENT EASY!

RENTAL

THE URBAN PACKAGE

For Smaller Spaces with a Dining Set.

LIVING ROOM: Sofa, Cocktail Table, Floor Lamp

BEDROOM: Headboard, Mattress Set, Chest, Nightstand, Table Lamp

DINING ROOM: Dining Table, 2 Dining Chairs

THE STUDIO PACKAGE

For Smaller Spaces.

LIVING ROOM: Sofa, Cocktail Table, Floor Lamp

BEDROOM: Headboard, Mattress Set, Chest, Nightstand, Table Lamp

DINING AREA: 2 Bar Stools

PRICING*

\$129/month for 12-month lease

\$149/month for 9-month lease

\$219/month for 6-month lease

THE NECESSITIES PACKAGE

For Larger Spaces with a Dining Set.

Three coordinated rooms, providing all the furniture you need to be comfortable in your new place.

LIVING ROOM: Sofa, Chair, Cocktail Table, End Table, Table Lamp

BEDROOM: Headboard, Mattress Set, Dresser & Mirror, Nightstand, Table Lamp

DINING ROOM: Dining Table, 4 Dining Chairs

PRICING*

\$159/month for 12-month lease

\$199/month for 9-month lease

\$269/month for 6-month lease

PURCHASE

HOME FURNITURE

Sofa & Chair Set\$299-\$1,099

4 Piece Bedroom Set.....\$299-\$799

Coffee Tables.....\$79-\$249

Artwork.....\$19-\$149

Dinette Sets.....\$199-\$999

End Tables\$79-\$199

Lamps\$19-\$99

Chest\$199-\$699



Furniture Rental & Sales Outlet

1920 State Road 436

Winter Park, FL 32792

407.678.2677

Mon-Fri 9-6, Sat 10-6, Sun Closed

cort.com/student



cort.com/student

LIVE. WORK. CELEBRATE.™

CORT™

IMPORTANT NUMBERS

Full Sail University

3300 University Blvd.
Winter Park, FL 32792
407.679.0100
Toll-Free: 800.226.7625

Winter Park Police

500 N. Virginia Ave.
Winter Park, FL 32789
Emergency Calls: 911
Non-Emergency Calls: 407.644.1313
www.wppd.org

Seminole County Sheriff's Office

Dennis M. Lemma, Sheriff
100 Eslinger Way
Sanford, FL 32773
Emergency Calls: 911
Non-Emergency Calls: 407.665.5100
Toll-Free: 866.FLA-SCSO (866.352.7276)
www.seminolesheriff.org

Orange County Sheriff's Office

John W. Mina, Sheriff
2500 W. Colonial Dr.
Orlando, FL 32804
Emergency Calls: 911
Non-Emergency Calls: 407.836.HELP (407.836.4357)
www.ocso.com

Crimeline

Call: 800.423.TIPS
Text "crimeline" plus your information to:
CRIMES (274637)
www.crimeline.org

Winter Park Fire Dept.

343 W. Canton Ave.
Winter Park, FL 32789
Emergency Calls: 911
Non-Emergency Calls: 407.644.1212
www.wpfd.org

Orange County Fire Department

6590 Amory Ct.
Winter Park, FL 32792
Emergency Calls: 911
Non-Emergency Calls: 407.249.3627

Seminole County Fire Department

1101 E. 1st St.
Sanford, FL 32771
Emergency Calls: 911
Non-Emergency Calls: 407.665.5175

Winter Park Chamber of Commerce

151 W. Lyman Ave.
Winter Park, FL 32789
407.644.8281
Fax: 407.644.7826
wpcc@winterpark.org
<https://winterpark.org>

East Orlando Chamber of Commerce

12301 Lake Underhill Rd., Ste. 245
Orlando, FL 32828
407.277.5951

Legal Aid Society

Orange County
100 E. Robinson St.
Orlando, FL 32801
407.841.8310
info@legalaidthocba.org

RENTERS INSURANCE AGENTS

It is strongly suggested that you acquire renters insurance. Leases stipulate that in the event of a robbery, natural disaster or other damage that befalls your apartment, the complex is only responsible for the repairs to the building. Your personal possessions are not covered and renters insurance is normally a very inexpensive way to protect your personal possessions, including your laptop. You are also encouraged to contact your home or car insurance provider to see if they offer renters insurance and how their rates compare.

Assurant

Quick and easy renters insurance online
<https://assurantrenters.com/>

P. Fudge and Associates, Inc.

Property and Casualty Insurance
1155 S. Semoran Blvd., Ste. 3-1142
Winter Park, FL 32792
407.965.4253
Fax: 407.386.7461
www.fudgeinsurance.com

Glenn Ritchie

Agent, State Farm
186 State Rd. 436
Casselberry, FL 32707
407.478.0771
<https://www.statefarm.com/agent/US/FL/Maitland/Glenn-Ritchie-2YZF91YS000>



statefarm.com

Don Kirkendall

Manager, AffordableONE Insurance
6960 Aloma Ave.
Winter Park, FL 32792
407.965.4166
1.866.750.3197 toll-free
www.affordableone.com

AREA RETAIL LOCATIONS

Area Grocers/Pharmacies

Walmart Neighborhood Market

2271 N. Semoran Blvd.
Winter Park, FL 32807
407.551.5160

Aldi

6766 Aloma Ave.
Winter Park, FL 32792
877.474.1008

Walgreen's Drug Store

7403 Aloma Ave.
Winter Park, FL 32792
Store: 407.677.8586
Pharmacy: 407.677.8589

CVS Pharmacy

7496 University Blvd.
Winter Park, FL 32792
407.657.6100

Shopping Directory

Target

3700 N. Goldenrod Rd.
Winter Park, FL 32792
407.670.0388

Walmart Supercenter

1241 Semoran Blvd., Unit 101
Casselberry, FL 32707
407.679.0377

Mechanic Services

N & G Complete Service & Sales

2931 Forsyth Rd.
Winter Park, FL 32792
407.657.5885
ngcarservices@gmail.com

Publix Supermarket

4000 N. Goldenrod Rd.
Winter Park, FL 32792
407.671.0211

Sprouts Farmers Market

1999 Aloma Ave.
Winter Park, FL 32792
407.702.1212

Whole Foods

1030 N. Orlando Ave.
Winter Park, FL 32789
407.377.6040

IKEA

4092 Eastgate Dr.
Orlando, FL 32839
407.355.3155

Park Avenue

Winter Park, FL 32789
Avenue of shops in downtown Winter Park
Winter Park Chamber of Commerce
407.644.8281

MEDICAL FACILITIES

AdventHealth Centra Care

3099 Aloma Ave.
Winter Park, FL 32789
407.951.6302
<https://centracare.org/central-florida>

AdventHealth Medical Group Community Medicine Clinic at Orlando

2501 N. Orange Ave., Ste. 411
Orlando, FL 32804
407.303.7298
www.adventhealthmedicalgroup.com/central-florida

AdventHealth Winter Park

200 N. Lakemont Ave.
Winter Park, FL 32790
407.646.7000
<https://www.adventhealth.com/hospital/adventhealth-winter-park>

Baldwin Park ER

2361 N. Semoran Blvd.
Orlando, FL 32807
407.677.2400
<https://www.hcafloridahealthcare.com/locations/baldwin-park-emergency>

CareNow Urgent Care

7460 University Blvd., Ste. 110
Winter Park, FL 32792
407.410.8945
<https://www.carenow.com>

Doctors/Dentists

Dr. Michael Barimo, D.O. Family Practice

438 N. Semoran Blvd., Ste. 206
Winter Park, FL 32792
407.678.2400

Winter Park Dental

Mainak Patel, DMD
6504 University Blvd.
Winter Park, FL 32792
407.678.1400
<http://www.winterparkdental.com/>

Consult the telephone directory for a variety of emergency clinics, walk-in clinics and health maintenance organizations throughout Central Florida.

HEALTH INSURANCE INFORMATION

Helen Kirkendall

Manager, AffordableONE Insurance
6960 Aloma Ave.
Winter Park, FL 32792
407.965.4166
1.866.750.3197 toll-free
www.affordableone.com
theywork4me@affordableone.com
crmall@affordableone.com

AffordableONE Insurance has all the major health insurance companies—Aetna, Assurant, Cigna, CoventryOne, GeoBlue, Golden Rule, Humana, United Healthcare, and many more. Insurance coverage for international students is available.

TRANSPORTATION SERVICES

Lynx

455 N. Garland Ave.

Orlando, FL 32801

407.841.5969

<https://www.golynx.com/>

The Yellow Cab Co.

324 W. Gore St.

Orlando, FL 32806

407.422.2222

www.mearstransportation.com/taxi-services

Orange, Seminole and Osceola counties are serviced by the Lynx public bus system. They do not run 24/7. The earliest buses pick up at 4:30 a.m. and the last bus leaves downtown Orlando at 12:15 a.m. Please call 407.841.5969 or go to www.golynx.com for information regarding the bus schedule for your apartment complex or to purchase a bus pass.

CHILD CARE INFORMATION

Child care can be arranged through Community Coordinated Child Care (4Cs) Information Services of Orange County at 407.522.2252 or consult a telephone directory for a variety of child care centers in your area.

K-12 SCHOOL INFORMATION

For students bringing their families to the Central Florida area:

In order to enroll your child as a first-time student in any Florida school, public or private, you must obtain a valid Florida Certificate of Immunization. Children must be five (5) years of age on or before September 1st of that year in order to enter kindergarten. Prior to entering first grade, your child must complete public or private kindergarten schooling.

The procedure for enrollment into a public school in Orange County is handled at the school's location. The child's parent or guardian is required to show verification of residency, a birth certificate for the child being enrolled, proof of immunization and proof that the child being enrolled has had a complete physical examination within the past twelve months.

For details concerning private schools, parochial schools and exceptional programs, consult your telephone directory. Additional information may be obtained from Orange County Public Schools at 407.317.3200.

IMPORTANT DATES

2025

First Day of Class		
January 6	May 5	September 2
February 3	June 2	September 29
March 3	June 30	October 27
April 7	August 4	November 24
Holiday Break Schedule		
Martin Luther King Jr. Day	January 20	
Spring Break	March 31—April 6	
Easter	April 20	
Memorial Day	May 26	
July 4 th Break	July 4	
Summer Break	July 28—August 3	
Labor Day	September 1	
Thanksgiving	November 27—November 30	
2025–2026 Winter Break	December 22—January 4	



LIVING EXPENSE BUDGET WORKSHEET

Using the information on this worksheet as a guideline, you can estimate your expenses, figure out what you can live without, and create a personal budget. Contact your Enrollment Guide Team at Full Sail if you have any questions about your individual situation, or if you are unsure of what to do next.

GUIDELINES FOR A BASIC MONTHLY BUDGET

(Prices are per person, based on 1 roommate)

Rent (varies per complex)	\$1050
Renter's Insurance (optional).	\$15
Power/Water	\$100
Cell Phone	\$70
Internet	\$25
Car Maintenance/Gas	\$175
Groceries	\$350
Health	\$38
School Supplies	\$15

Full Sail Students spend an average of \$1600-1900 in living expenses.

Remember: students are suggested to arrive with 2-3 months of living expenses saved. This does not include deposits on the apartment, phone, utilities, etc.

MONTHLY INCOME

FAMILY SUPPORT _____

SAVINGS _____

WORK _____

TOTAL INCOME: _____

MONTHLY EXPENSES

Housing

RENT _____

RENTER'S INSURANCE _____

FURNITURE _____

ELECTRICITY _____

WATER _____

CELL PHONE _____

INTERNET/CABLE _____

Transportation

AUTO INSURANCE _____

GASOLINE _____

CAR MAINTENANCE (optional) _____

Food

GROCERIES _____

DINING OUT (example: subs, pizza, coffee)

Miscellaneous/Personal

DEBT (min. monthly payment only) _____

CREDIT CARDS _____

PERSONAL LOAN _____

PERSONAL/ENTERTAINMENT
(example: clothes, movies, gaming) _____

TOTAL MONTHLY EXPENSES: _____

+ If your income is more than your expenses, you have money left to save.

- If your expenses are more than your income, look at your budget to find expenses that can be cut.

Financial Aid is to be spent for authorized educational costs only. Some examples are tuition, fees, food and living, books, supplies and transportation.

****IMPORTANT – PLEASE READ****

All real estate advertised herein is subject to the Federal Fair Housing Act, which makes it illegal to advertise any preference, limitation or discrimination based on race, color, religion, sex, handicap, familial status or national origin or intention to make any such preference, limitation or discrimination. We will not knowingly market any rental property which is in violation of the law. All persons are hereby informed that all dwellings contained herein are available on an equal opportunity basis.

Prices quoted are subject to change at the discretion of apartment owner/managers and are provided for information purposes only. Silver City Partners, LTD., a licensed Real Estate Broker, does not make any representations as to opinions and facts. All terms and conditions of rentals are subject to change. Projected costs of utilities are approximate and should not be construed as guaranteed monthly amounts when calculating monthly expenses as individual use will vary.



Housing Guide

Full Sail University
3300 University Boulevard
Winter Park, FL 32792-7429

Administration
407.679.0100
Full Sail University ® Copyright 2025